

# ‘HELP PLZ’: Navigating Minecraft as a digital education space with postgraduate students

Stuart Nicol @nicolvision  
and Phil Sheail @philshe  
with thanks to Noreen Dunnett @comcultgirl

MSc in Digital Education #mscde  
#uoeltconf18





# MSc in Digital Education



## World-class Masters programme that will challenge your thinking about education and technological change

### Delivered fully online




Although this is a distance-learning course, you won't be alone: you will have the opportunity to work closely with your fellow students and tutors in a properly supported, collaborative and vibrant online learning environment.

### Critical and practical

The MSc in Digital Education gives professionals in higher and further education and training and development the practical skills and critical insight they need in this fast-moving and richly diverse field.

### Research-based teaching

The MSc programme is delivered by experienced teachers who are also active researchers in the field. Our programme is linked to the work of the Centre for Research in Digital Education.

-  [Technologies Handbook](#)
-  [Your blog and your blog tutor](#)
-  [Forum for general discussions](#)

# An Introduction to Digital Environments for Learning

 [Course participants contact details](#)

Minecraft names, Twitter handles, whatever you want to share, put it here!

► **Open all** ▼ **Close all**

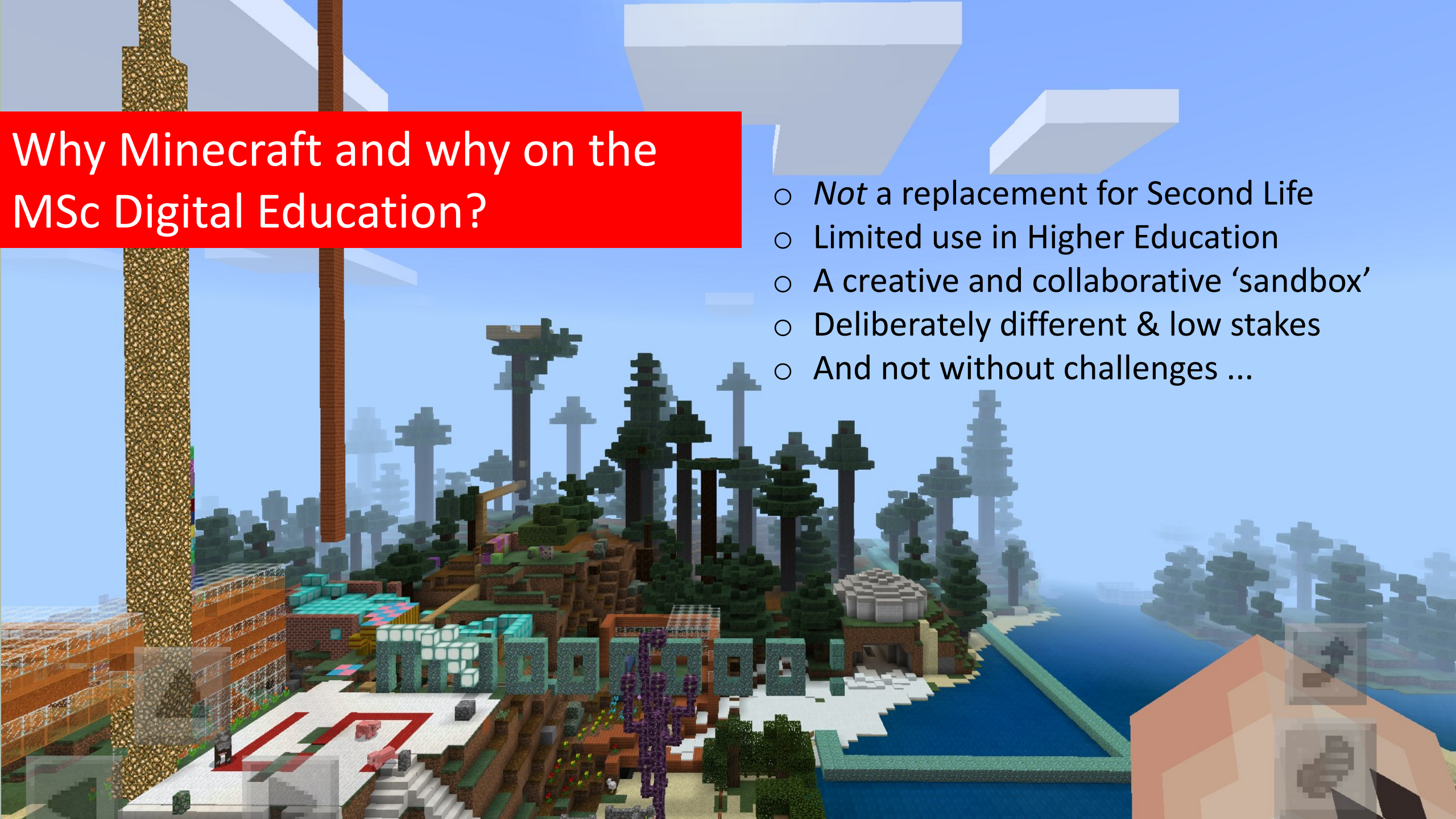
Instructions: Clicking on the section name will show / hide the section.

- |   |  |         |
|---|--|---------|
| 1 | ► <b>Starting off (week 0) - Toggle</b>                  | Topic 1 |
| 2 | ► <b>Minecraft: playing across all 12 weeks - Toggle</b> | Topic 2 |
| 3 | ► <b>Constructing community (week 1) - Toggle</b>        | Topic 3 |
| 4 | ► <b>Technology and the teacher (week 2) - Toggle</b>    | Topic 4 |
| 5 | ► <b>Critical perspectives (weeks 3 and 4) - Toggle</b>  | Topic 5 |
| 6 | ► <b>Sanctuary (week 5) - Toggle</b>                     | Topic 6 |
| 7 | ► <b>Spaces (weeks 6 and 7) - Toggle</b>                 | Topic 7 |
| 8 | ► <b>Open everything (weeks 8 and 9) - Toggle</b>        | Topic   |



# Why Minecraft and why on the MSc Digital Education?

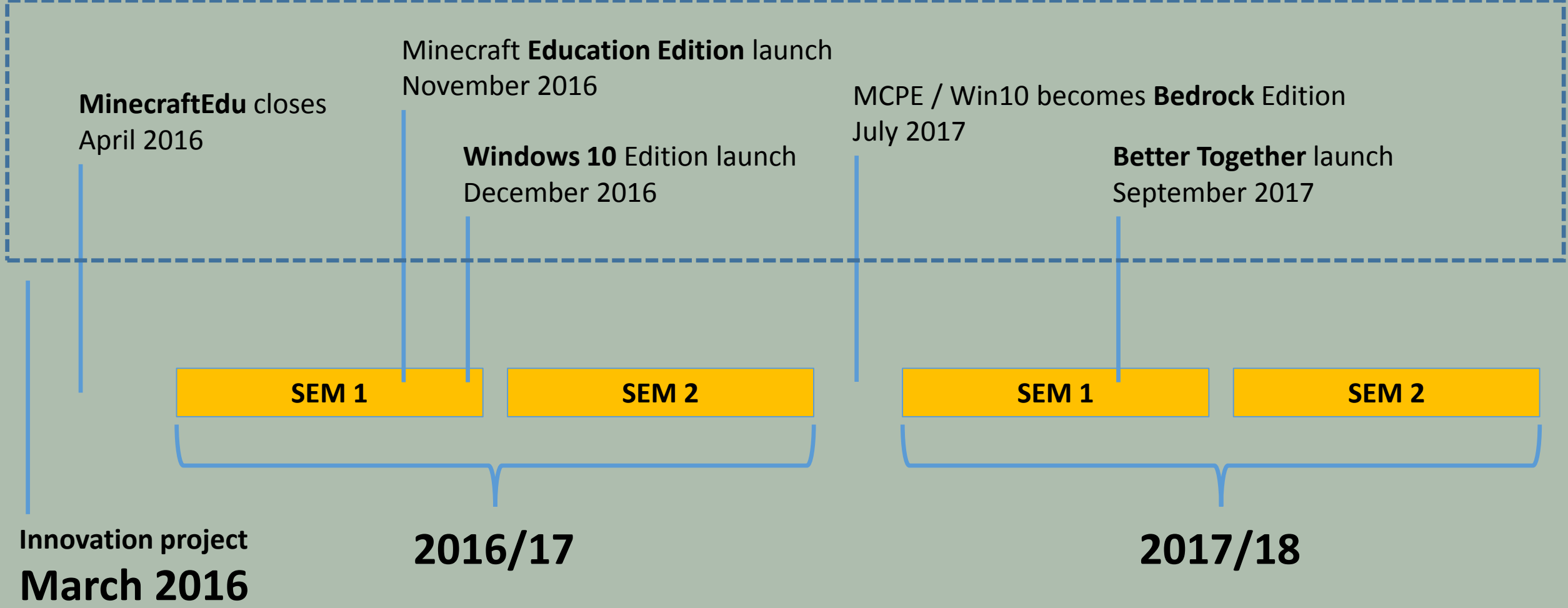
- *Not* a replacement for Second Life
- Limited use in Higher Education
- A creative and collaborative 'sandbox'
- Deliberately different & low stakes
- And not without challenges ...



# SHARED WORLDS



# CHANGES TO MINECRAFT







DOWNLOAD



REALMS

# MINECRAFT



STORE



MENU

## MINECRAFT REALMS

YOUR OWN WORLD, ALWAYS ONLINE

FREE  
TRIAL



GET REALMS FOR  
**MINECRAFT: JAVA  
EDITION**

FREE  
TRIAL



GET REALMS  
FOR  
**MINECRAFT**



**A PRIVATE WORLD, ALWAYS ONLINE FOR YOU AND YOUR  
FRIENDS!**



**philshe**  
@philshe



It's a snow day in Minecraft [#mscde](#) See you later in the IDEL Realm [#mscidel](#) with [@Comcultgirl](#) and [@nicolvision](#)



4:44 PM - 1 Mar 2018

10 Likes



# Thinking about...university space, public space, digital space and learning environments

'If everything is moving where is here?'

(Massey 2005 on 'the event of place')

Rosi Braidotti on universities, cities, mediated space

(video, Centre of Contemporary Culture, Barcelona)

Tim Ingold on public space and 'the thing' for dispute resolution

(video, Centre of Contemporary Culture, Barcelona)

Morville, P. (2005) *Ambient Findability*

Lakoff, G. and Johnson, M.(1980) *Metaphors We Live By*



Be prepared for weirdness...



**Jen Ross**

@jar

Following



"Right, so far I've destroyed a magic book, derailed a carriage and ridden a llama. What next?" - "tyrone the destroyer" in today's [#mscidel](#) Minecraft tutorial :-)

3:07 PM - 23 Feb 2018

18 Likes



4



18



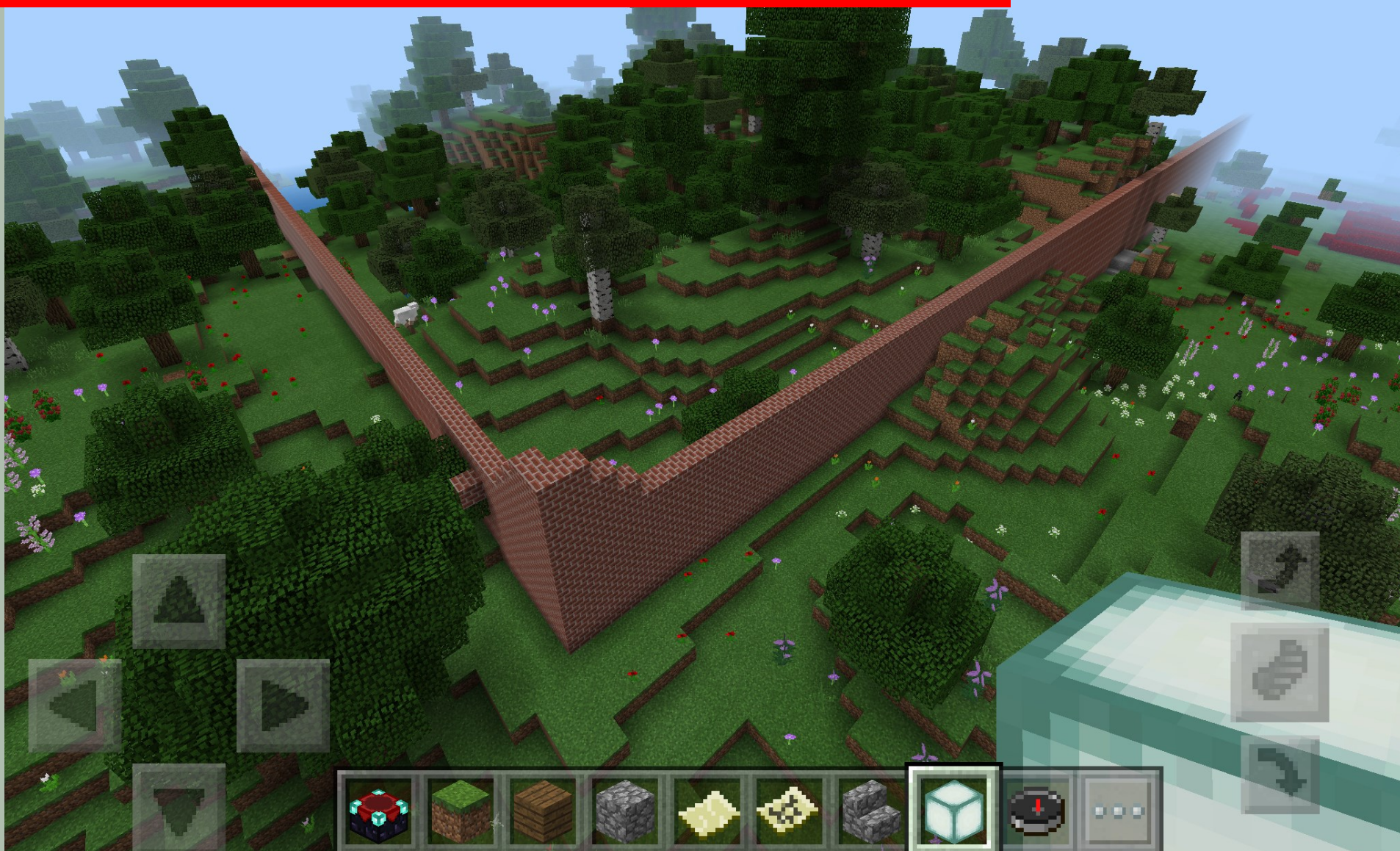
“Don’t put all your chickens in  
one castle.”







“Hello neighbour, let's chat about your wall.”





Before...



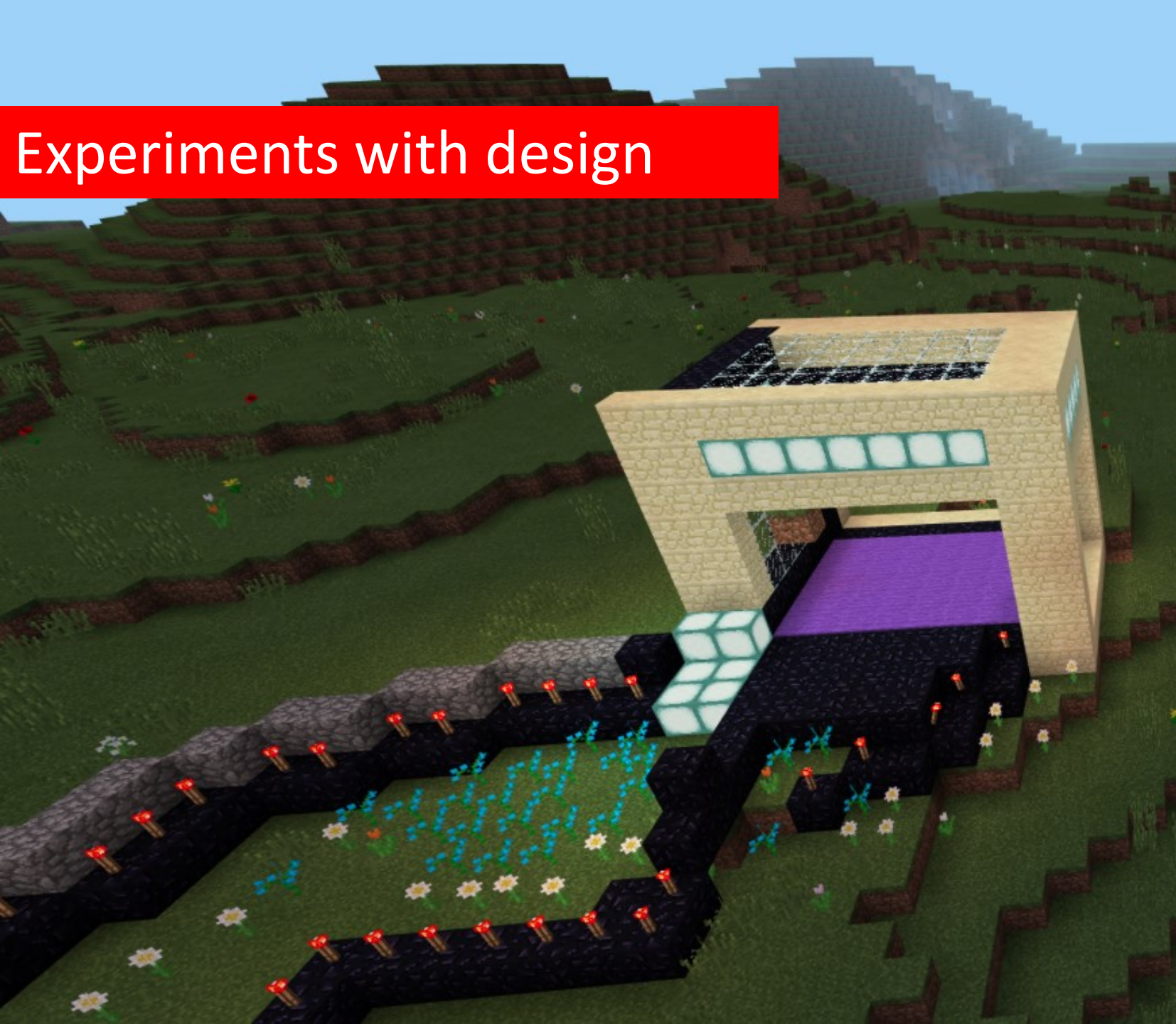


And after... "HELP PLZ"





# Experiments with design



'Large open spaces are designed for energy flow...the centre can be accessed via boat, located adjacent to the sea pool.'

A selection of natural materials, sandstone, cobblestone, white quartz and obsidian are applied to complement the natural landscape...Sea beacons are remodelled as ceiling lighting and feature in the main building.'

Mary-Anne Kyriakou 2017



# Experiments with music #1



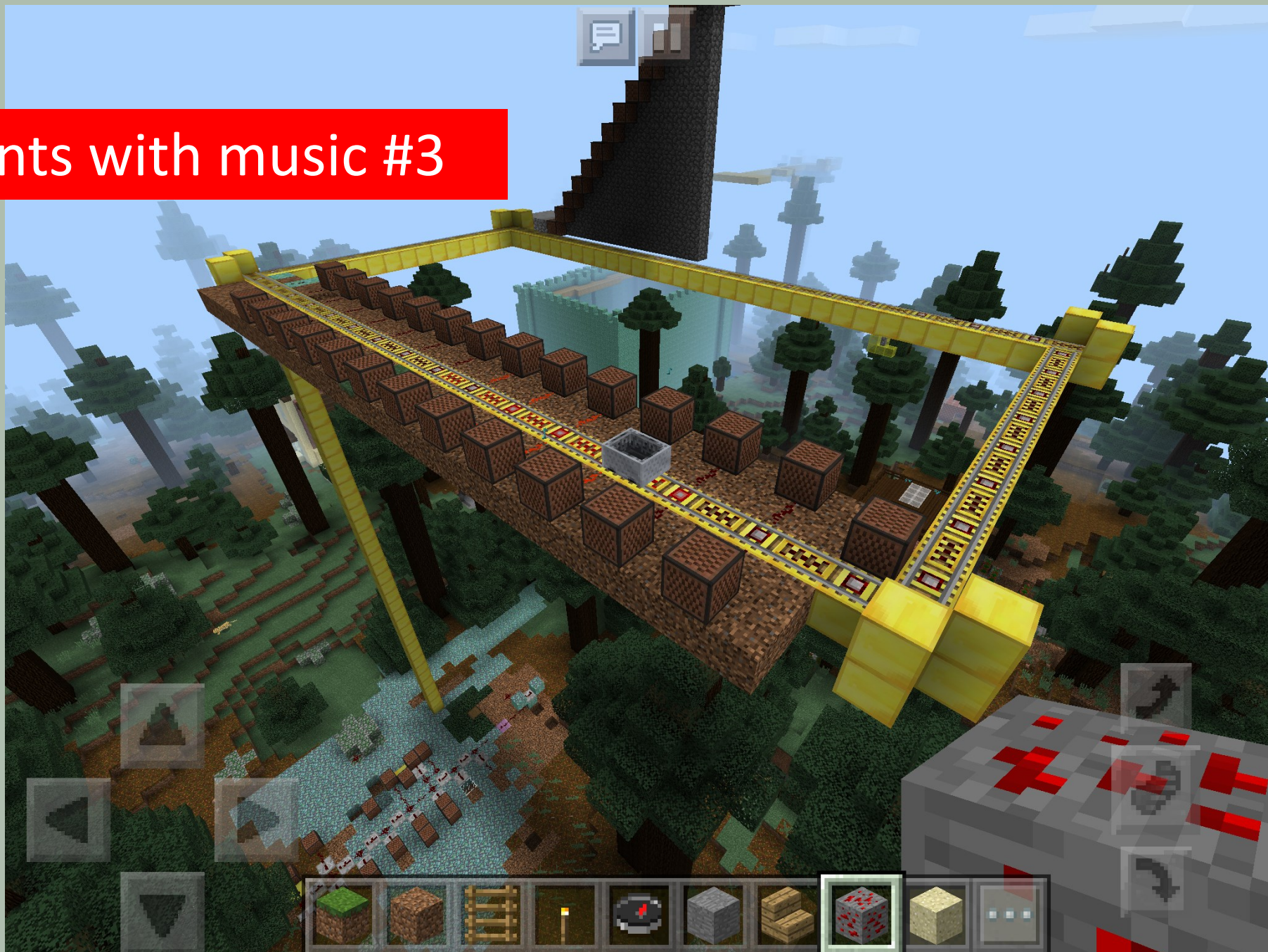


# Experiments with music #2





# Experiments with music #3





# Experiments with music #4



# Thanks for listening!

Stuart Nicol @nicolvision  
and Phil Sheail @philshe

with special thanks to  
Noreen Dunnett  
Neil Davison  
Tom Hinks  
Mary-Anne Kyriakou  
Anshul Lau

and the students and tutors on the  
MSc in Digital Education #mscde  
#uoeltconf18

