

Provision for Children with Complex Additional Support Needs in Scotland: Patterns and Challenges

Sheila Riddell

Centre for Research in Education Inclusion and Diversity

www.creid.ed.ac.uk



Structure of presentation

- **What are additional support needs and what counts as a complex need?**
- **Who is being identified as having different ‘types’ of additional support needs and what is the social profile of children in different categories?**
- **What types of provision are currently available and where are the shortfalls?**
- **What challenges arise in ensuring that services are geared towards children’s (and parents’) rights?**

Which children have complex ASN?

- **Definition extremely difficult – lack of consensus**
- **Category tends to be descriptive – and circular**
- **Generally not defined as a percentage of the population – although earlier work estimated that children with ‘severe low incidence disabilities’ accounted for 0.1% of the total pupil population.**



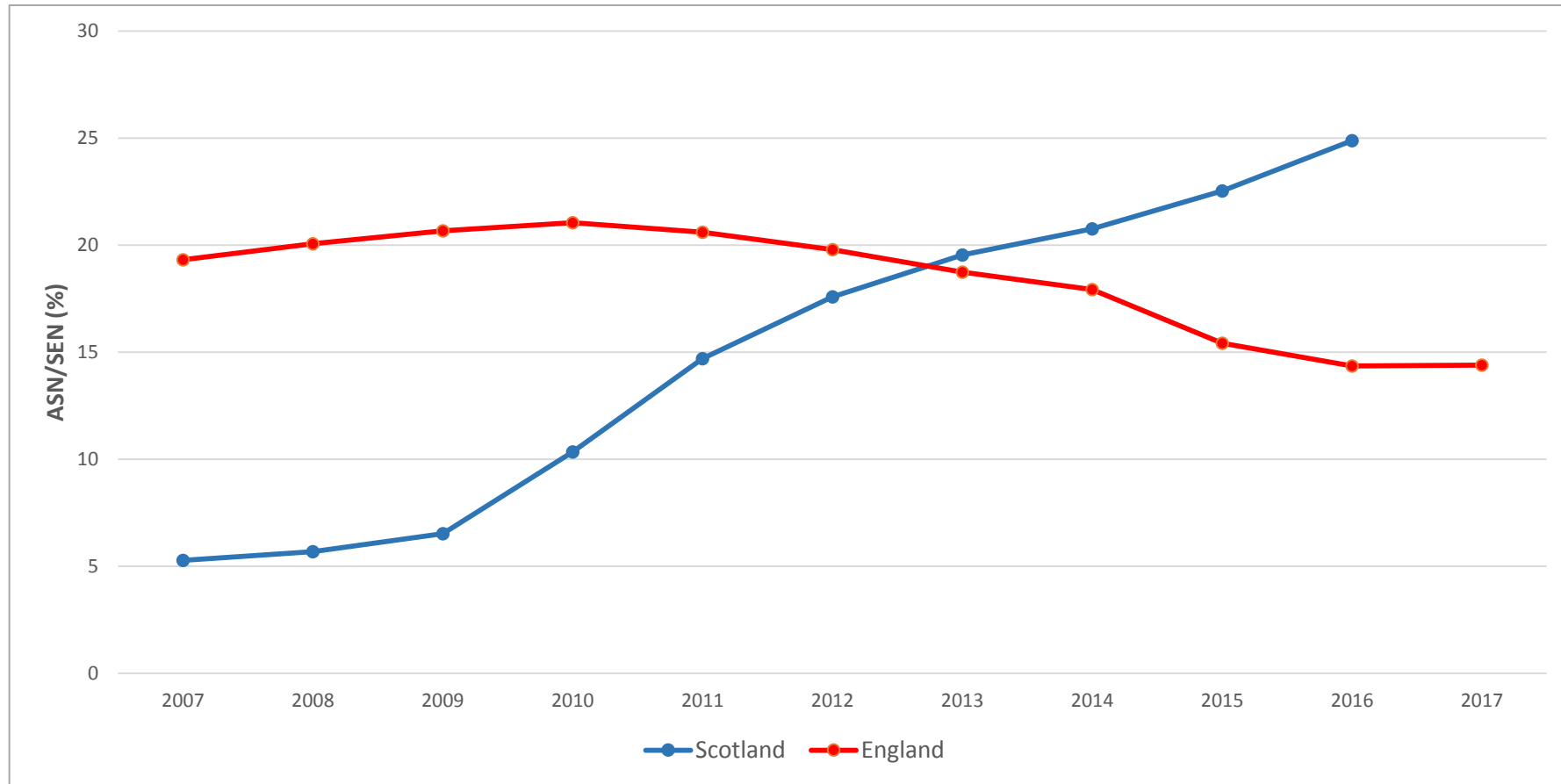
Which children have complex ASN?



Following definition is provided in SG's Ten Year Strategy:

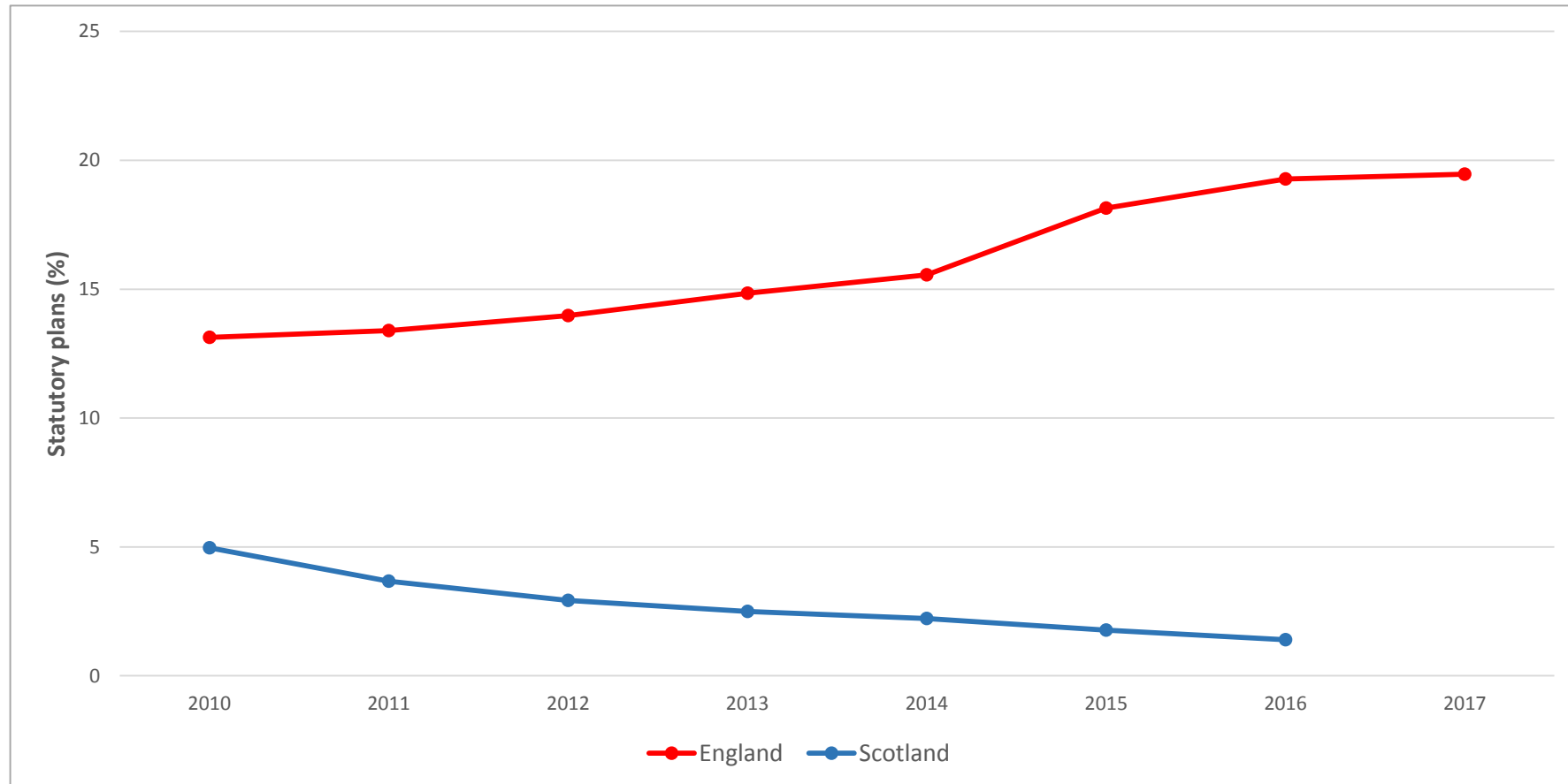
- **Children with Co-ordinated Support Plan**
- **Children and young people age 3-18 who do not have a CSP but are at Level 3 or 4 of staged assessment process**
- **Children attending grant aided or independent special school**

Overall rates of ASN (Scotland)/SEN (England)



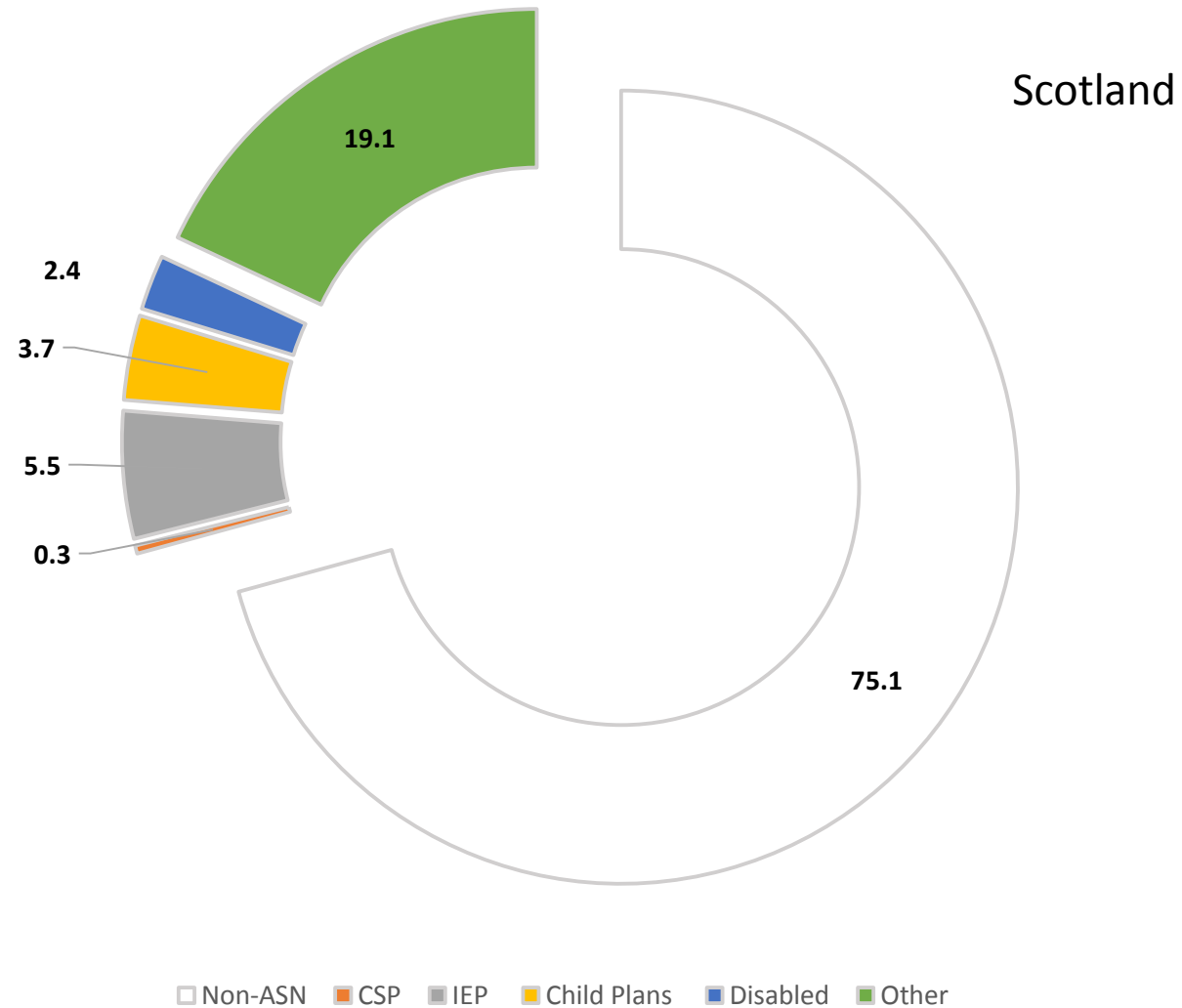
Overall rate of SEN decreasing in England, overall rate of ASN increasing in Scotland

Proportion of children with ASN/SEN with statutory plans



Proportion of SEN pupils with Statement or EHC plan increasing in England
Proportion of ASN pupils with CSP decreasing in Scotland

Snapshot of ASN plans



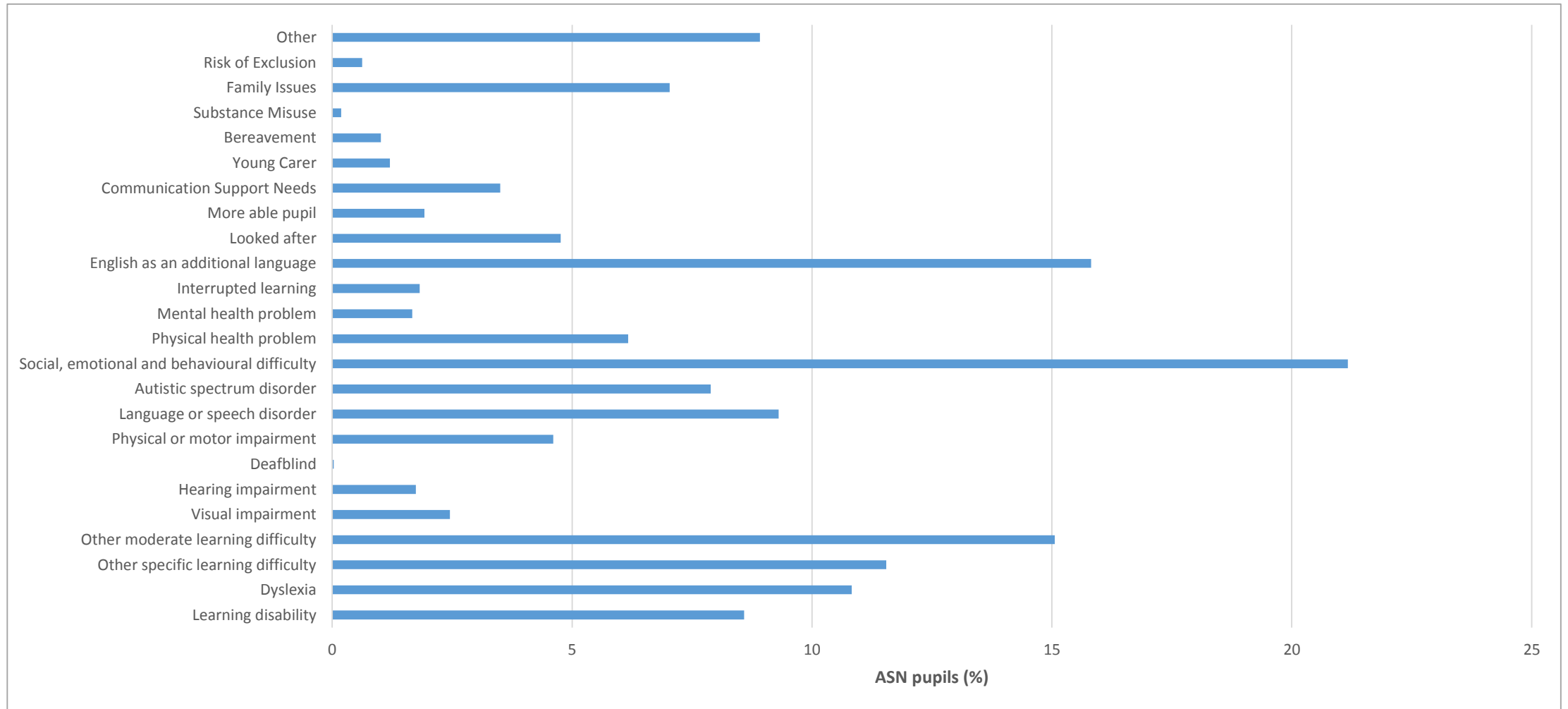


Type of need – Growing number of categories

Marked expansion in non-normative categories e.g. SEBD.

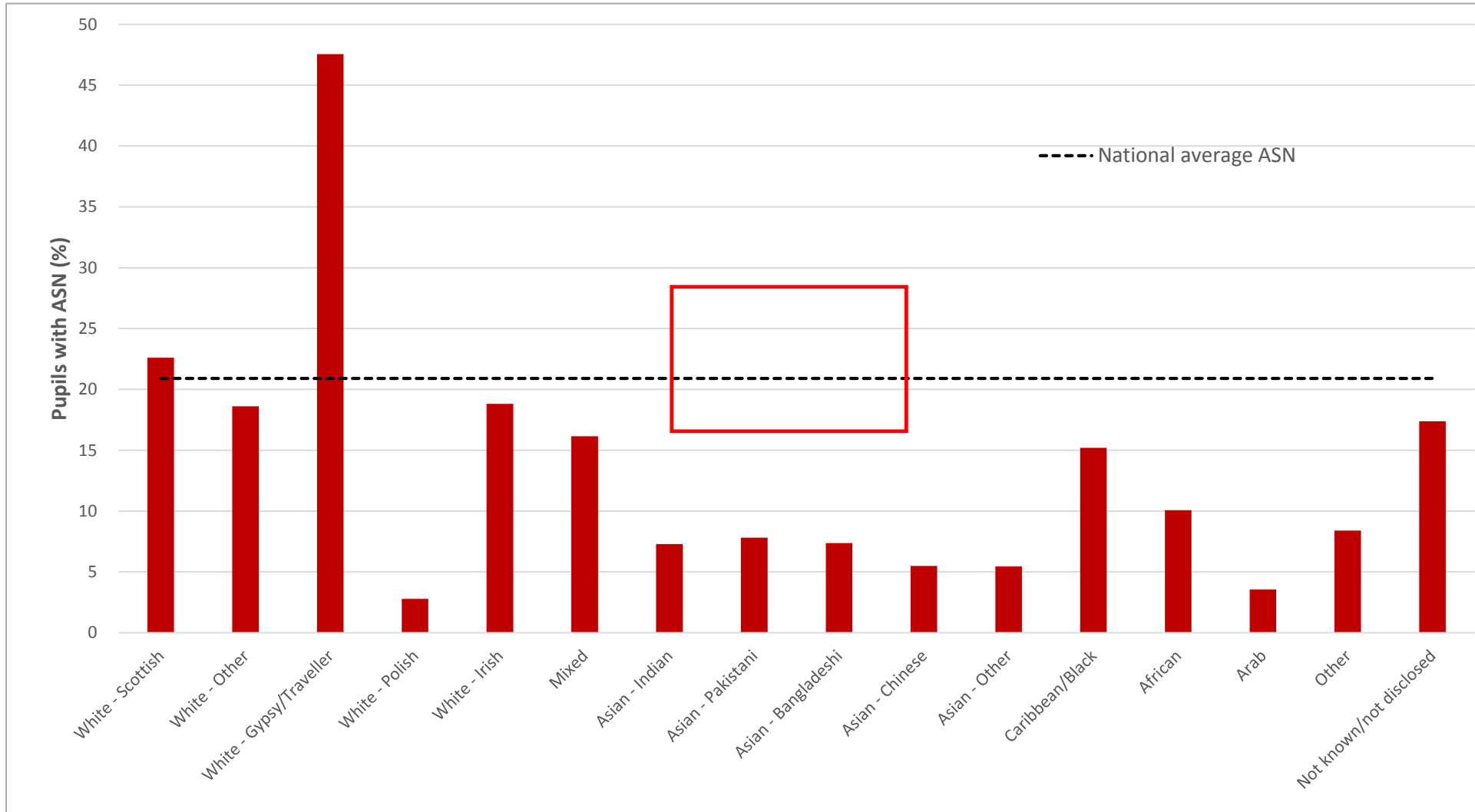
EAL second largest category

Scotland

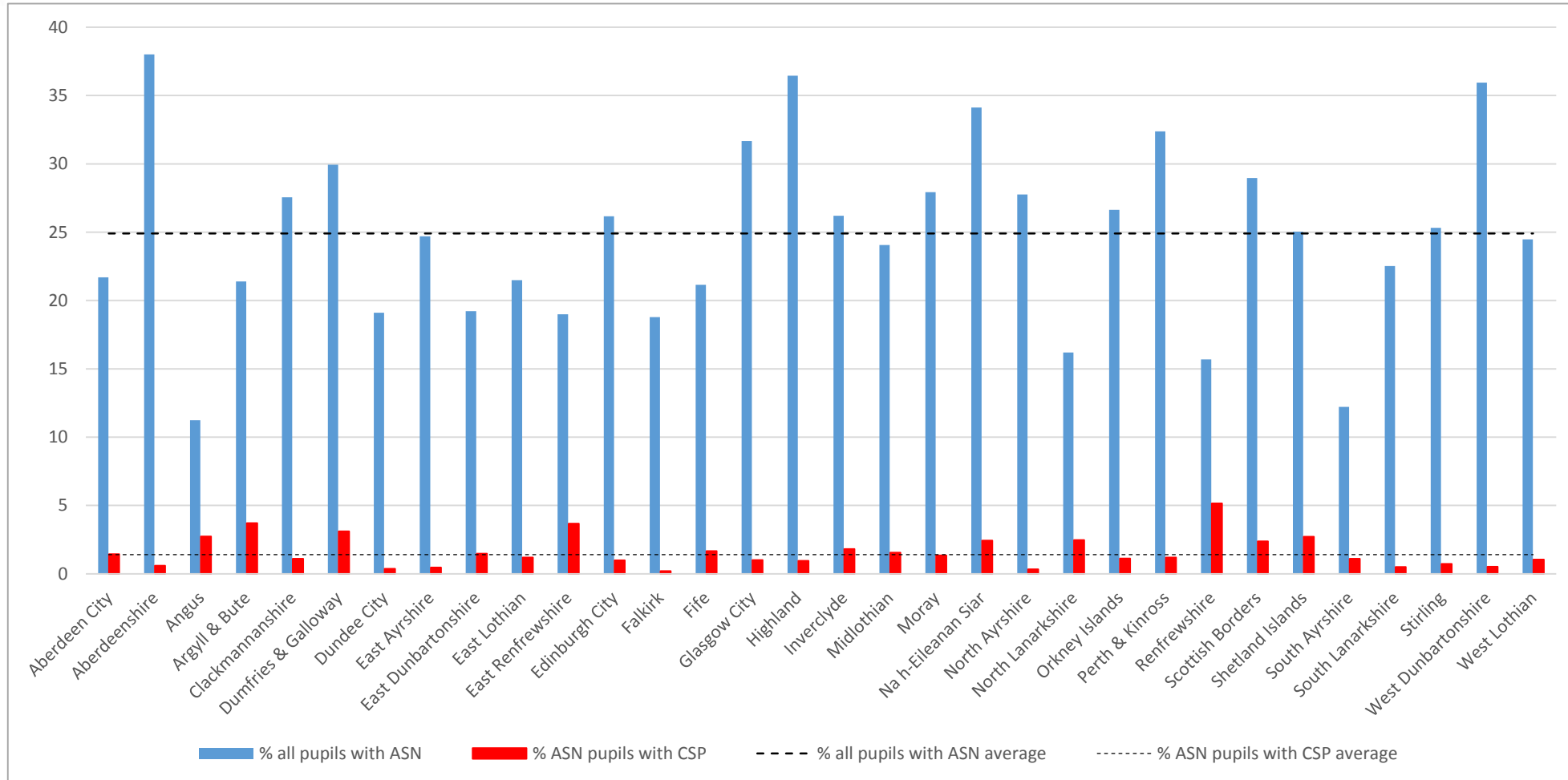


Ethnicity

When category of EAL is removed, children of Asian heritage less likely to be identified than other groups

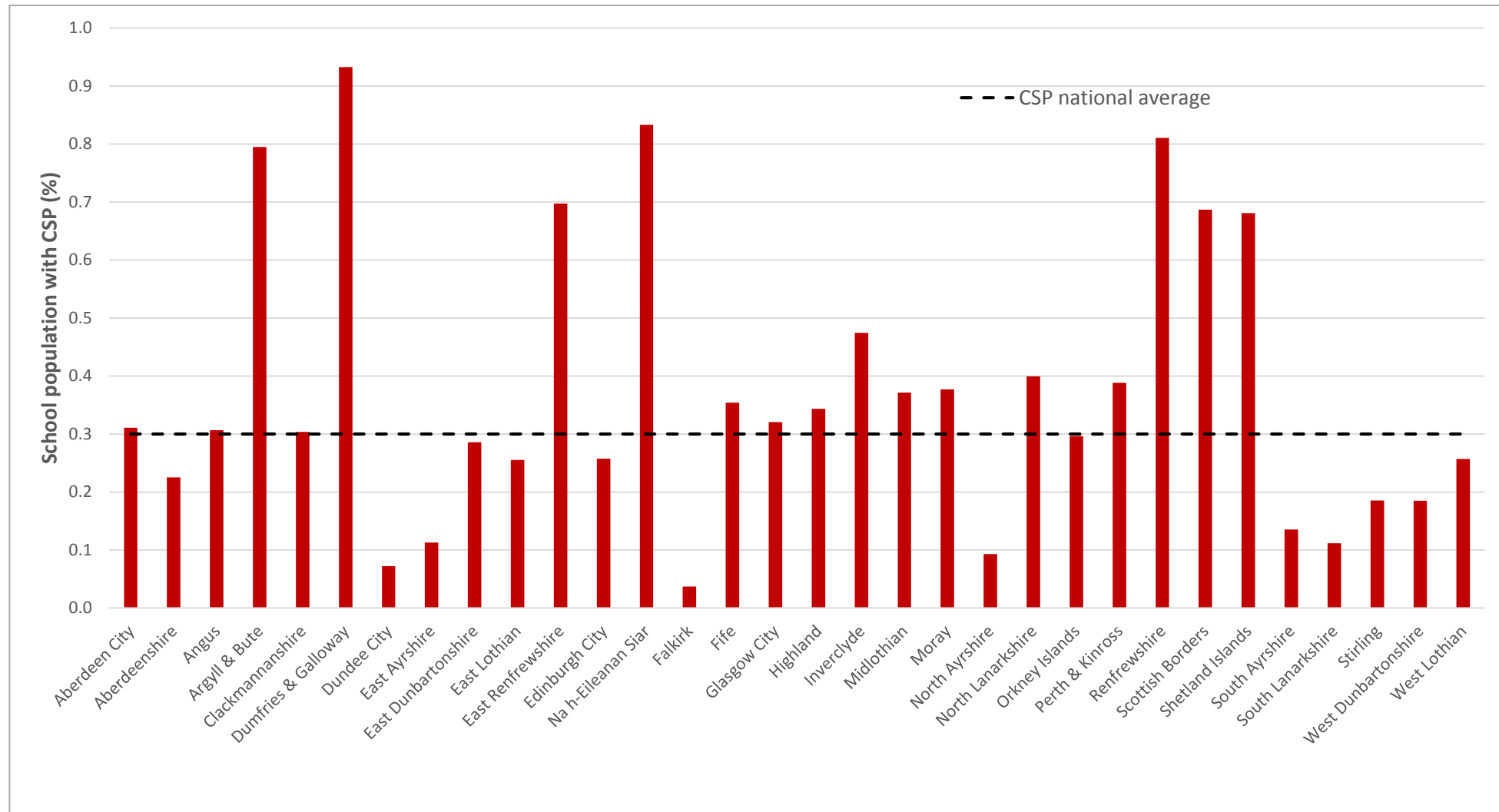


Regional Variation - Scotland



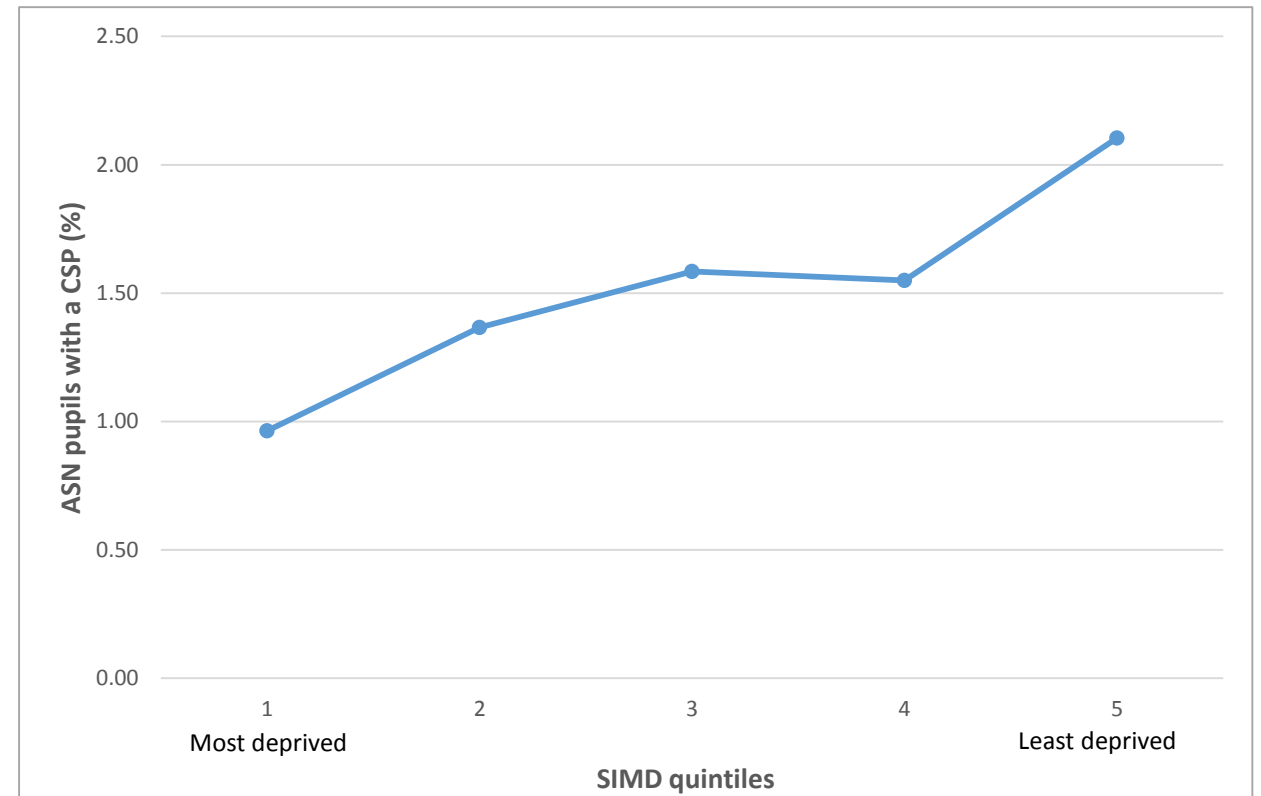
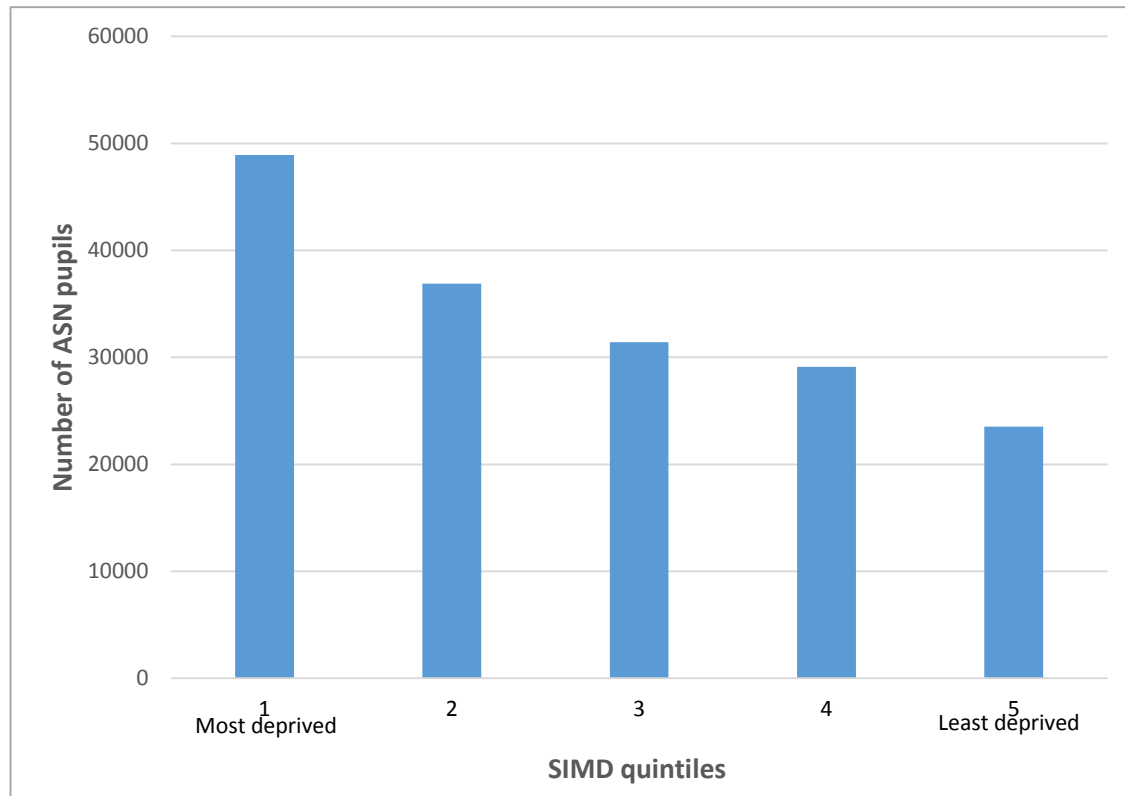
Considerable variation in ASN between local authorities
 Proportion ASN pupils with CSP also variable

Regional Variation - Scotland



Considerable variation in use of CSP between local authorities

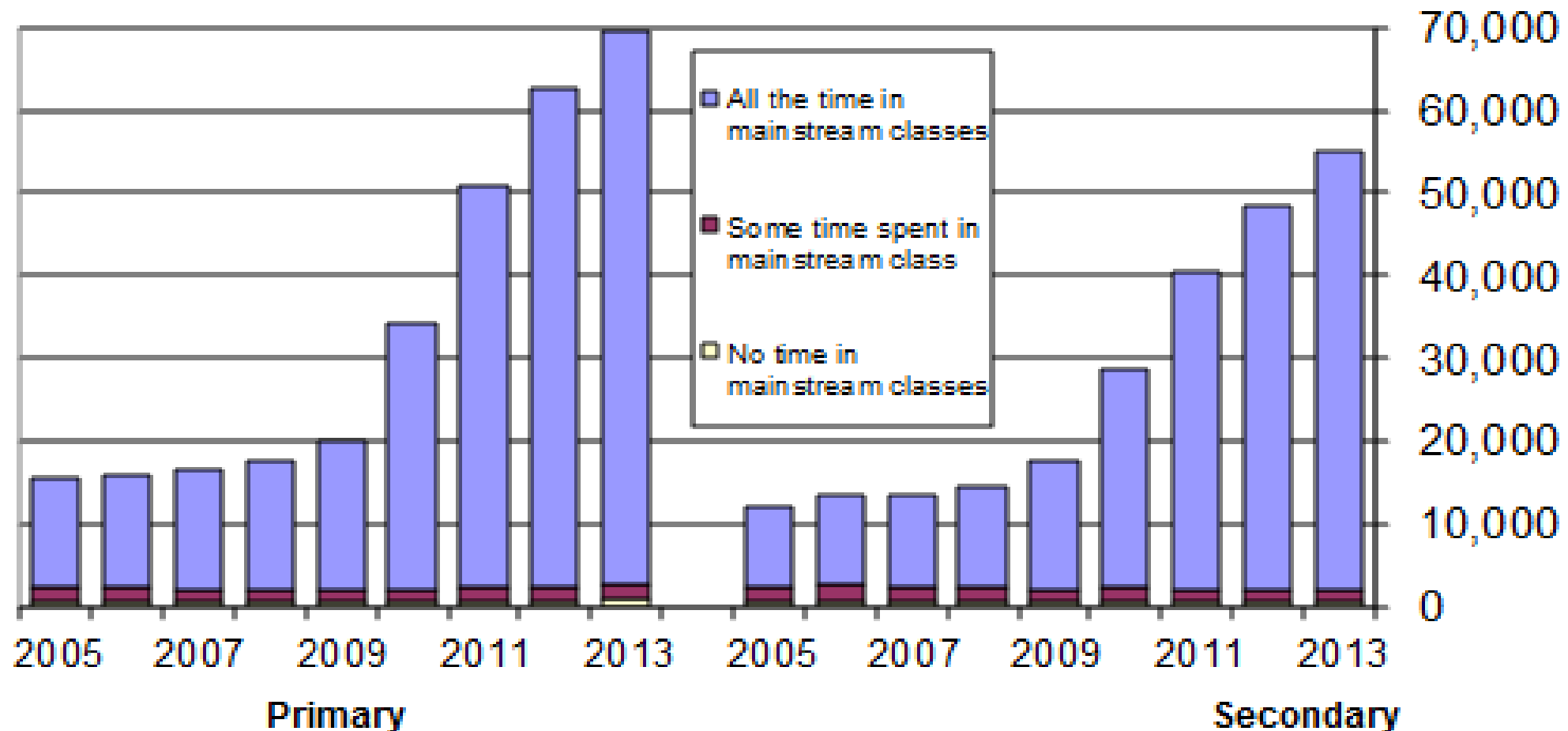
Social Deprivation - Scotland



Higher numbers of ASN pupils in most deprived areas
More use of CSPs in less deprived areas

Number of children with ASN and use of special and mainstream settings

Special schools concentrated in urban areas.
Grant aided schools reflect historical happenstance



Broad messages from the statistics

- **Growth in children identified with ASN generally due to expansion of categories and plans**
- **Decrease in use of CSPs (Statutory plans) and IEPs**
- **Children from poorer backgrounds more likely to be identified as having ASN – but less likely to receive a statutory plan. Cause for concern?**
- **Great regional variation in identification of ASN and use of CSPs**



Education (Scotland) Act 2016

Extends children's rights – almost identical to those of young people and parents



- **Great efforts will be needed to include children in all aspects of ASN provision. How are children with complex needs to be involved in service commissioning and review?**
- **How are their rights to participation and redress to be realised?**
- **Danger that rights are cosmetic and tokenistic.**
- **Particular challenges for children from poorer backgrounds and with complex needs.**
- **Legislation emphasises the need for assessment of capacity & judgement about whether the impact of exercising a right might be detrimental to child's well-being.**

Thanks!

Any questions?