



Centre for Research in  
Education Inclusion  
and Diversity



# How do Scotland and England perform in relation to higher education participation?

## Understanding the role of colleges in Scotland

Lucy Hunter Blackburn  
*University of Edinburgh*

# Outline

UCAS entry rate at age 18

Higher Education Initial Participation Rate  
(up to age 30)

Entry routes through further education (FE)  
colleges: comparative issues

# UCAS Age 18 Entry Rate

Source	University and College Admission Service (UCAS)
Countries by domicile	England, Northern Ireland, Scotland and Wales
Age	Entrants through UCAS “main scheme” aged 18 as a percentage of all 18 year olds
Coverage	All using UCAS, overwhelmingly institutions specialising in providing degree-level higher education - universities and university colleges account for 94% entrants in England, 98% in Scotland.
Excludes	Undergraduate Teacher Training (UTT) - except in Scotland, where UTT included from 2015 (= c5% of Scottish entrants) Open University Conservatoires across UK (inc RCS) HE in FE colleges in Scotland (except colleges forming part of UHI)

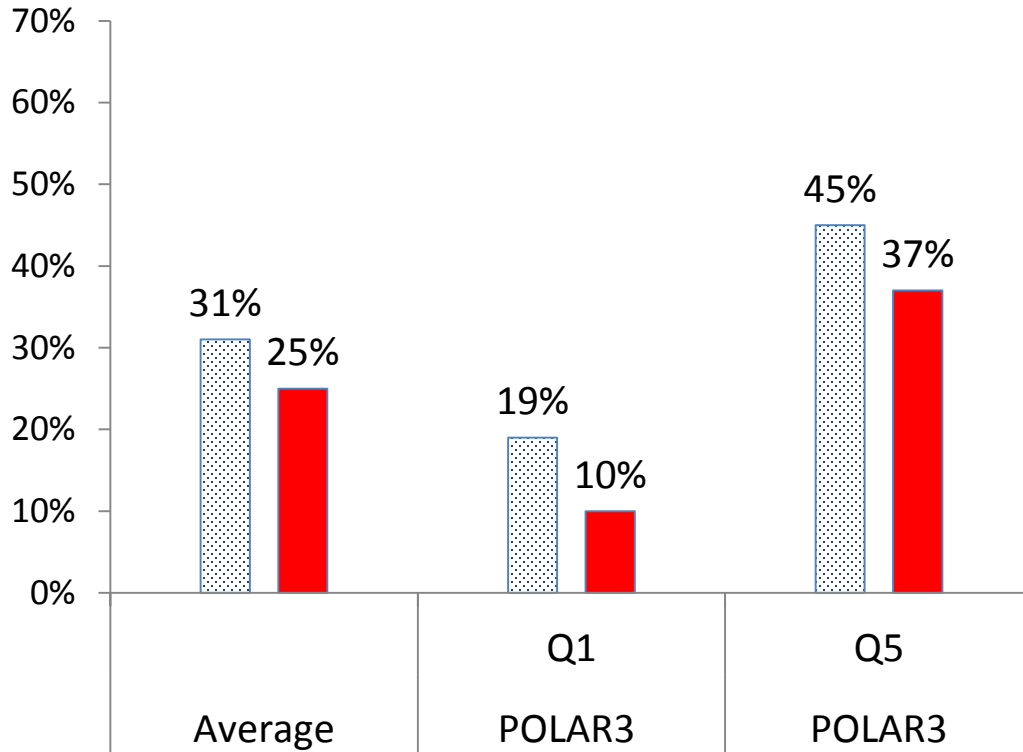
## Measuring at age 18: acceptances in each age band as % of all acceptances up to age 19

	England	Northern Ireland	Scotland	Wales
Up to 17	0.3%	0.2%	2.8%	0.1%
18	<b>71%</b>	<b>79%</b>	<b>75%</b>	<b>73%</b>
19	29%	21%	22%	27%
Measurement date	18 on 31 August of year in question		18 on 28 February <u>of the following year</u>	18 on 1 July of year in question

Note: Figures for age 18 applicants as a percentages of all applicants up to age 19 are identical for England, NI, Wales in 2015; 74% for Scotland.

# UCAS Age 18

## Entry rates 2015



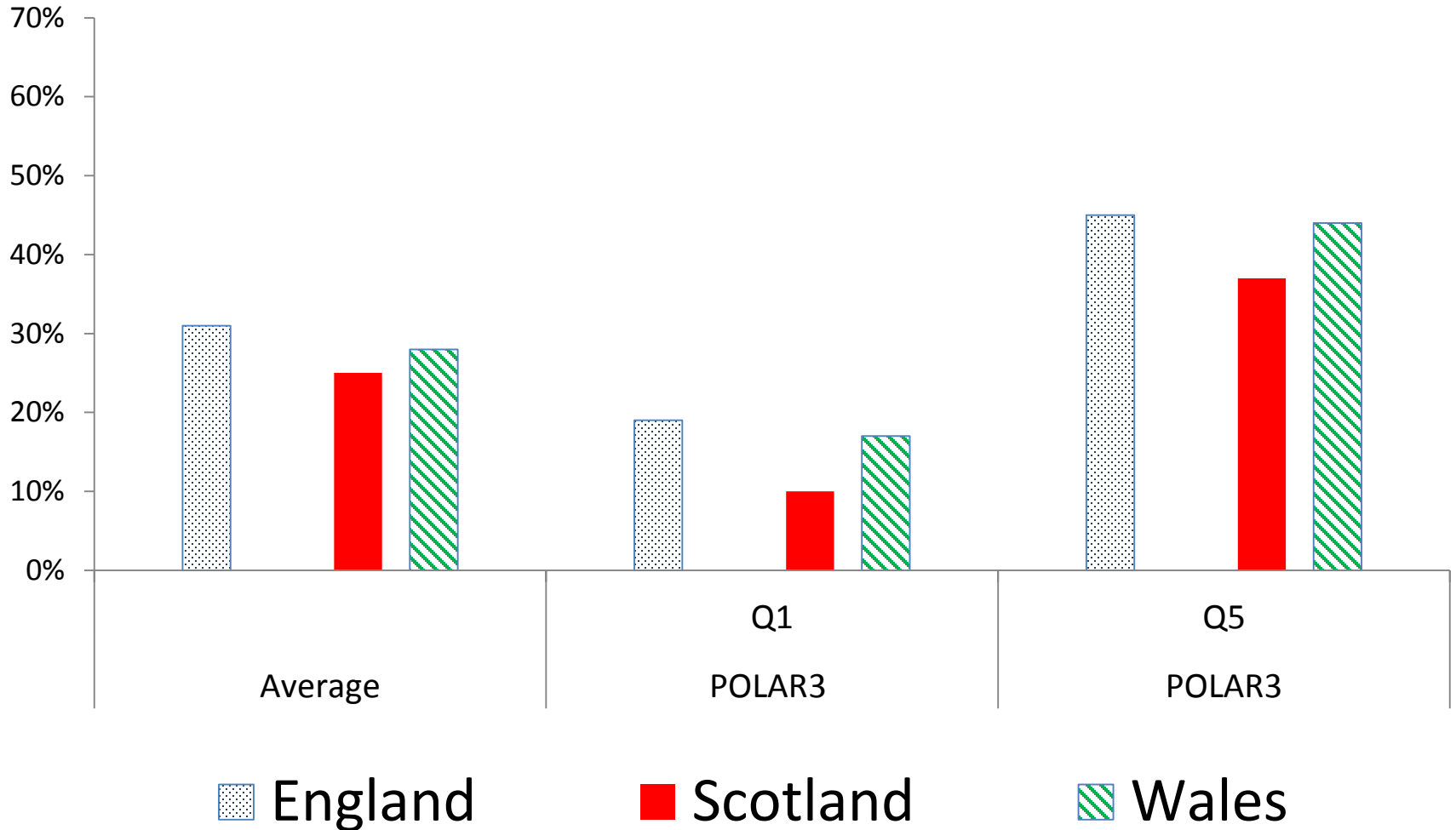
■ England ■ Scotland

## Scotland as % England

Average	78%
Q1	56%
Q5	82%

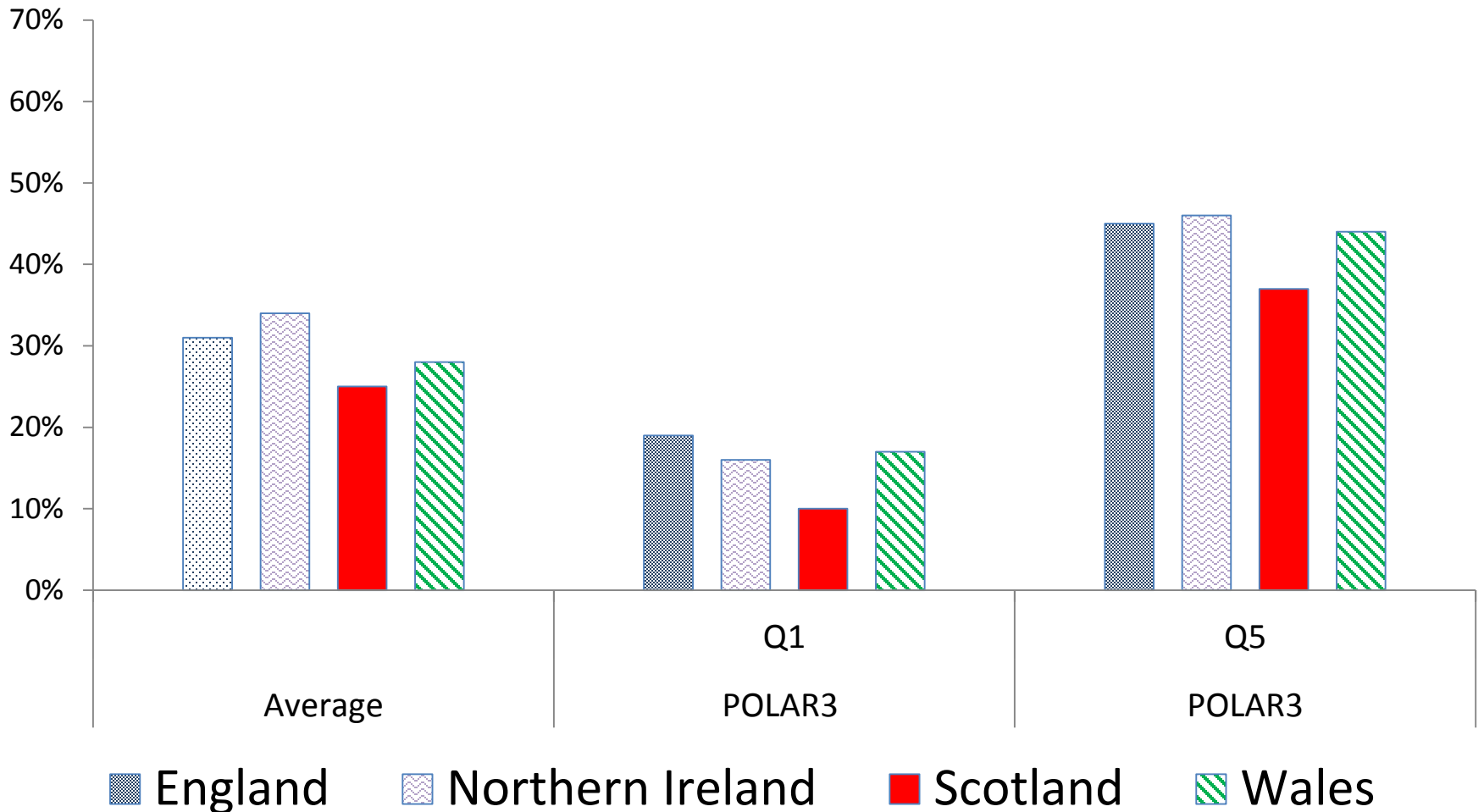
# UCAS Age 18

## Entry rates 2015



# UCAS Age 18

## Entry rates 2015

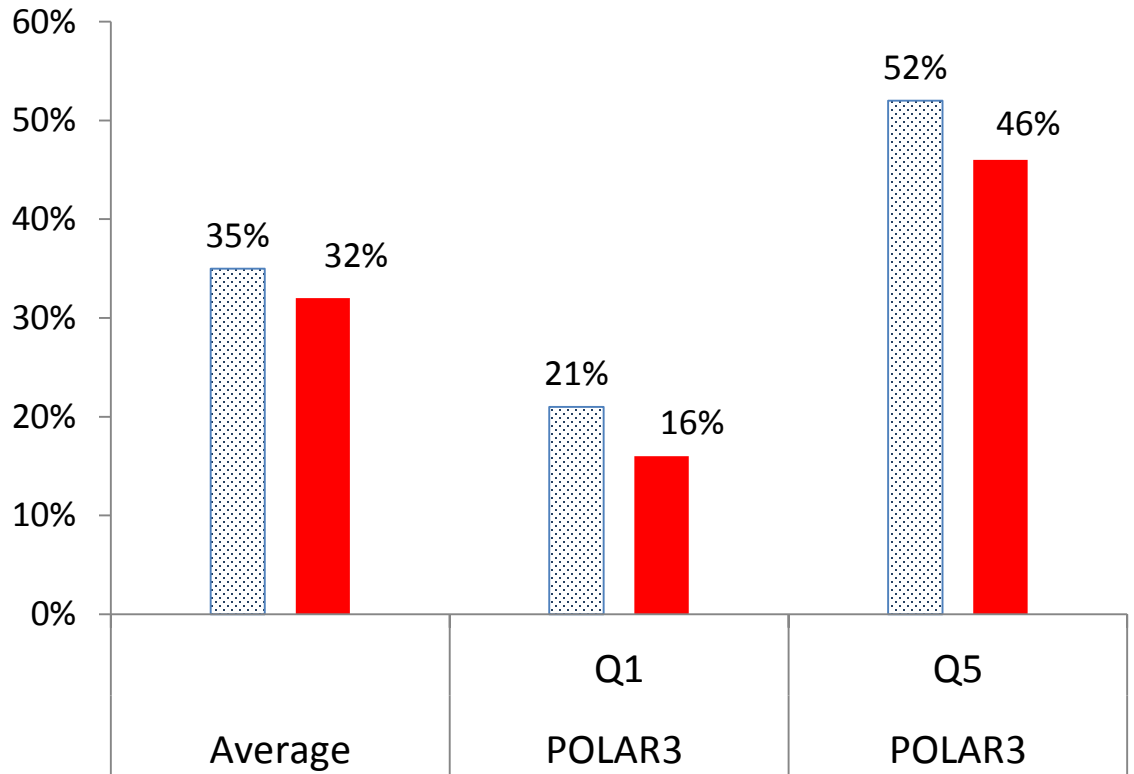


# UCAS Age 18

## Scotland and % of England

## Application rates 2015

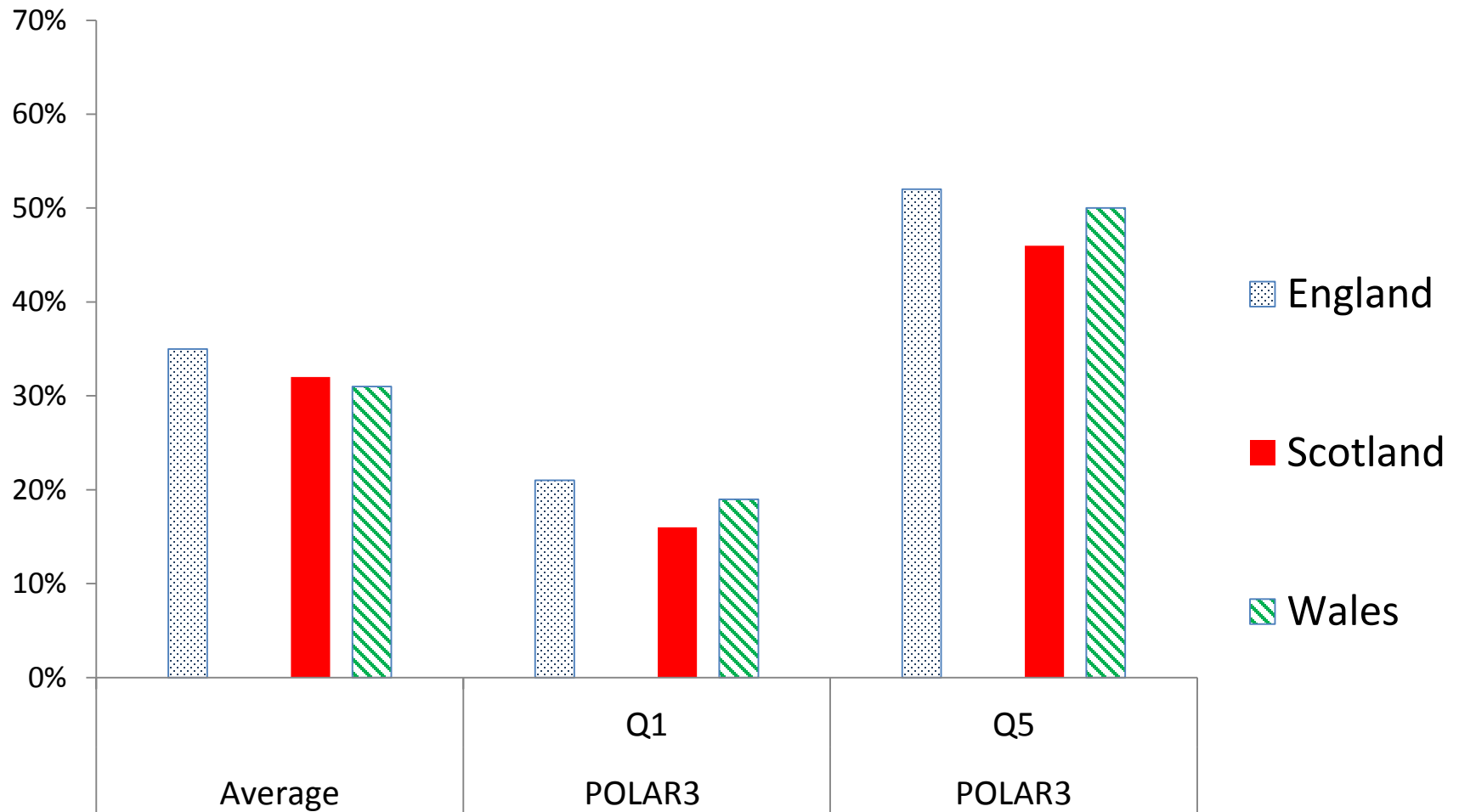
Average	91%
Q1	74%
Q5	91%



■ England ■ Scotland

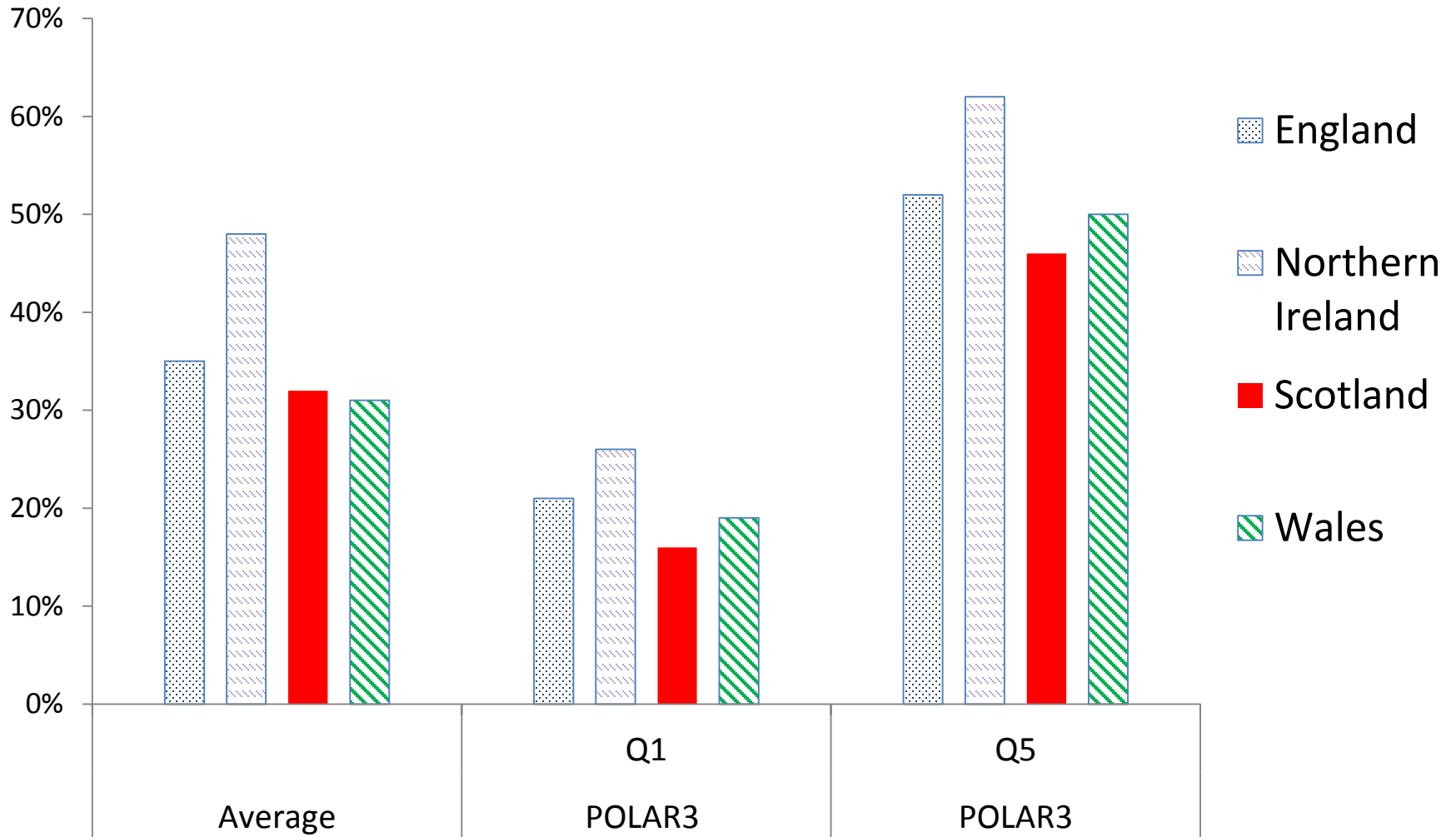
# UCAS Age 18

## Application rates 2015

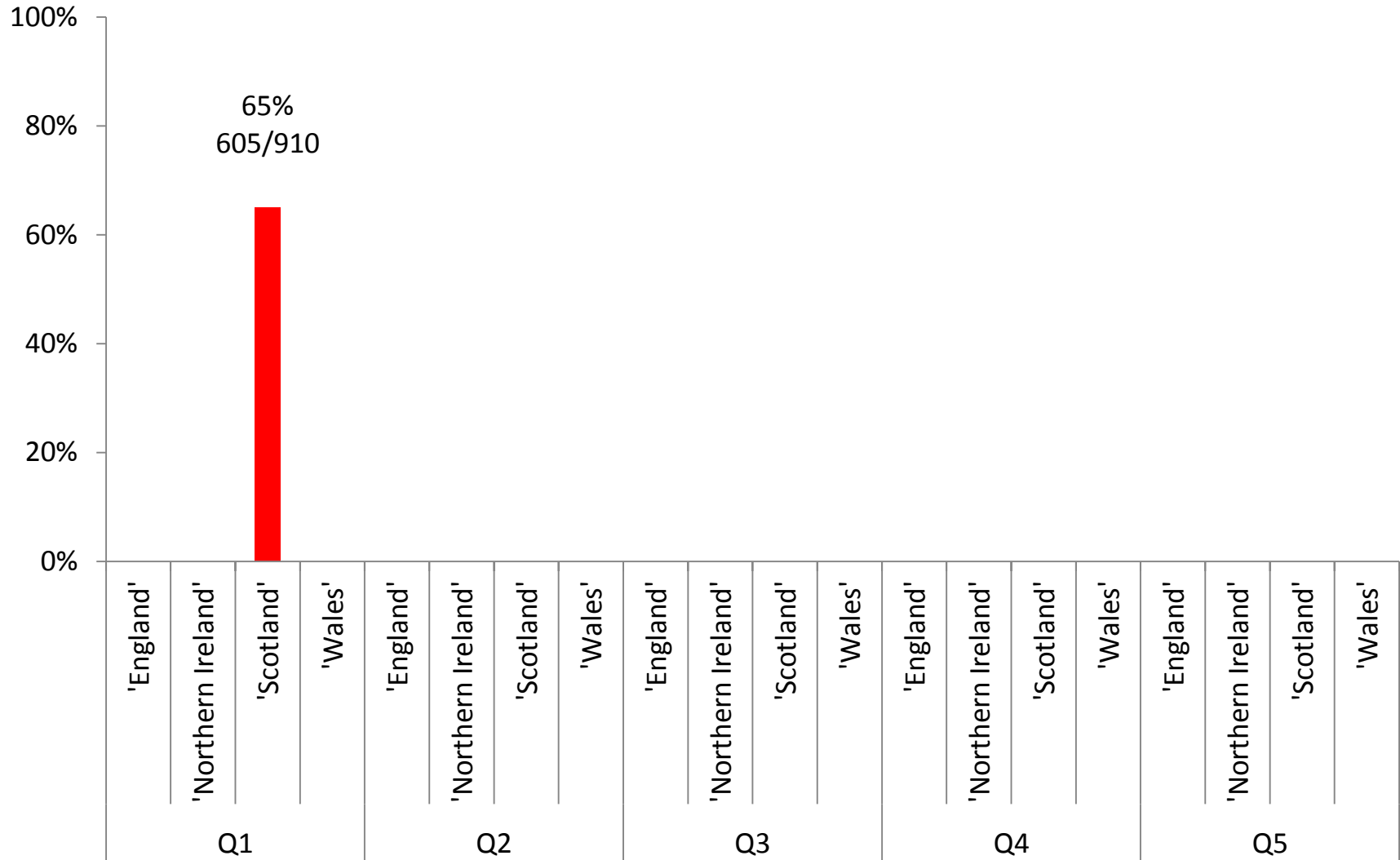


# UCAS Age 18

## Application rates 2015

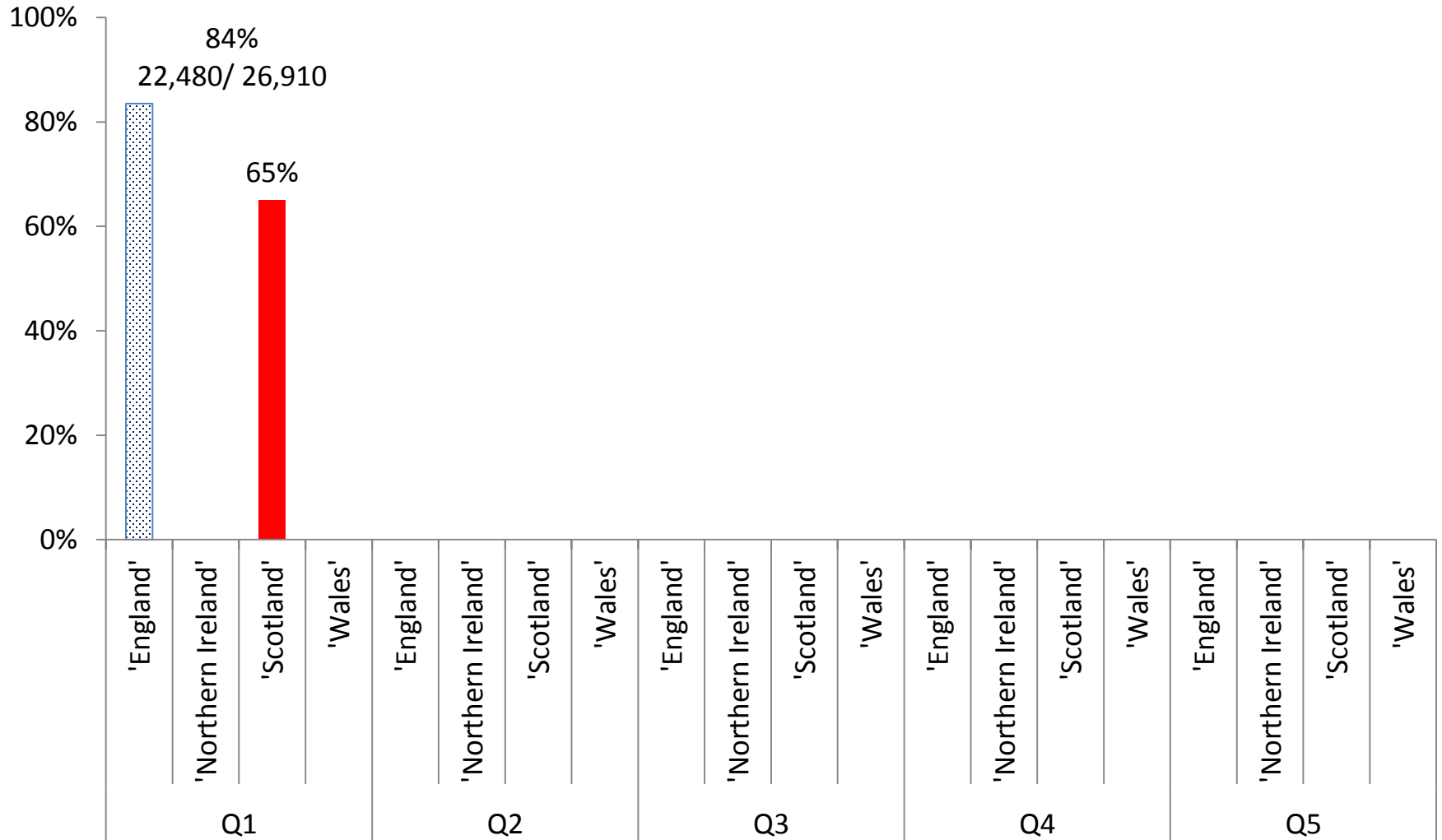


# UCAS acceptance rates at age 18 by POLAR3 quintile: 2015 cycle by domicile (Scotland only)



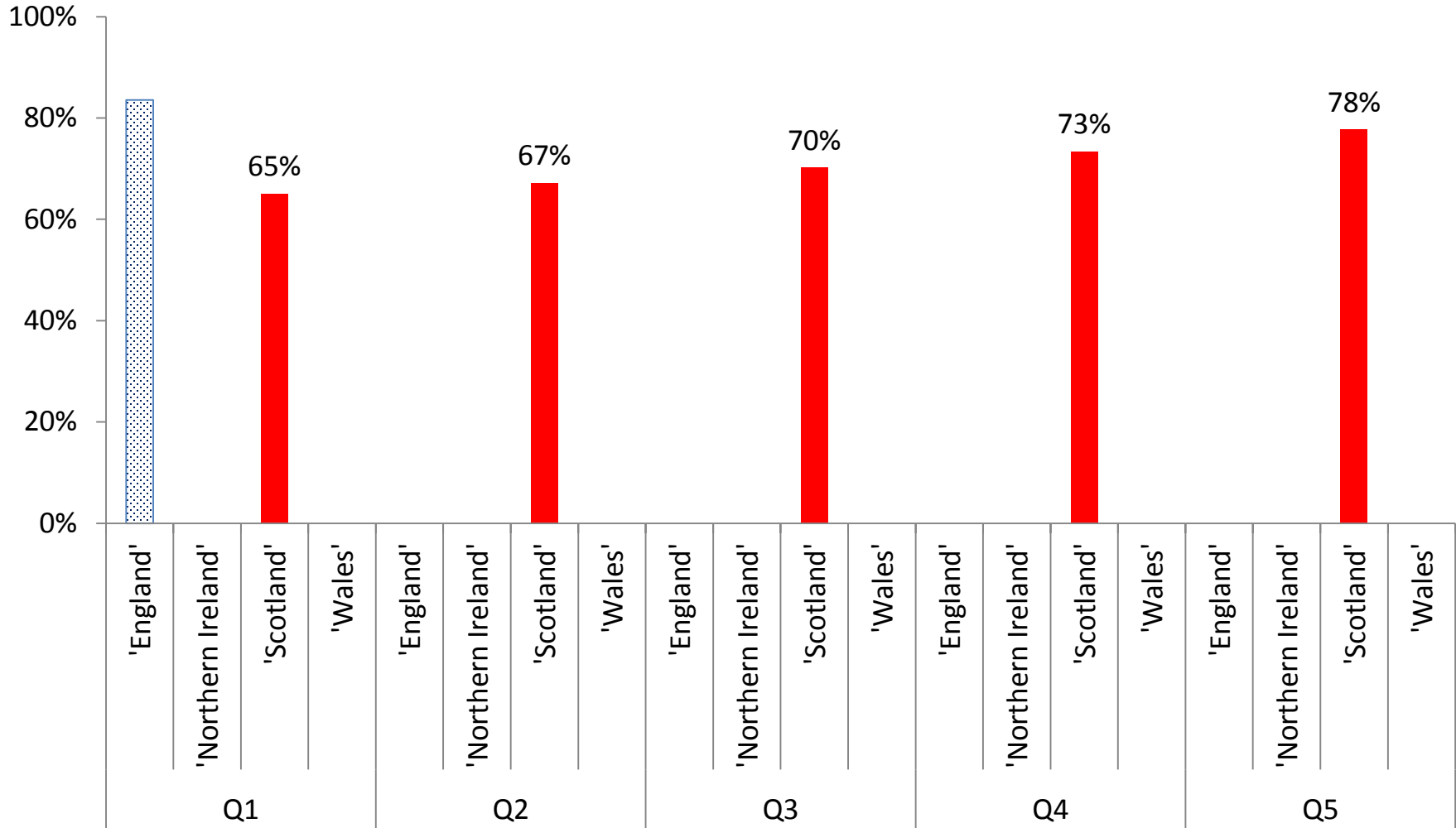
Source: UCAS

# UCAS acceptance rates at age 18 by POLAR3 quintile: 2015 cycle by domicile (Scotland and England)



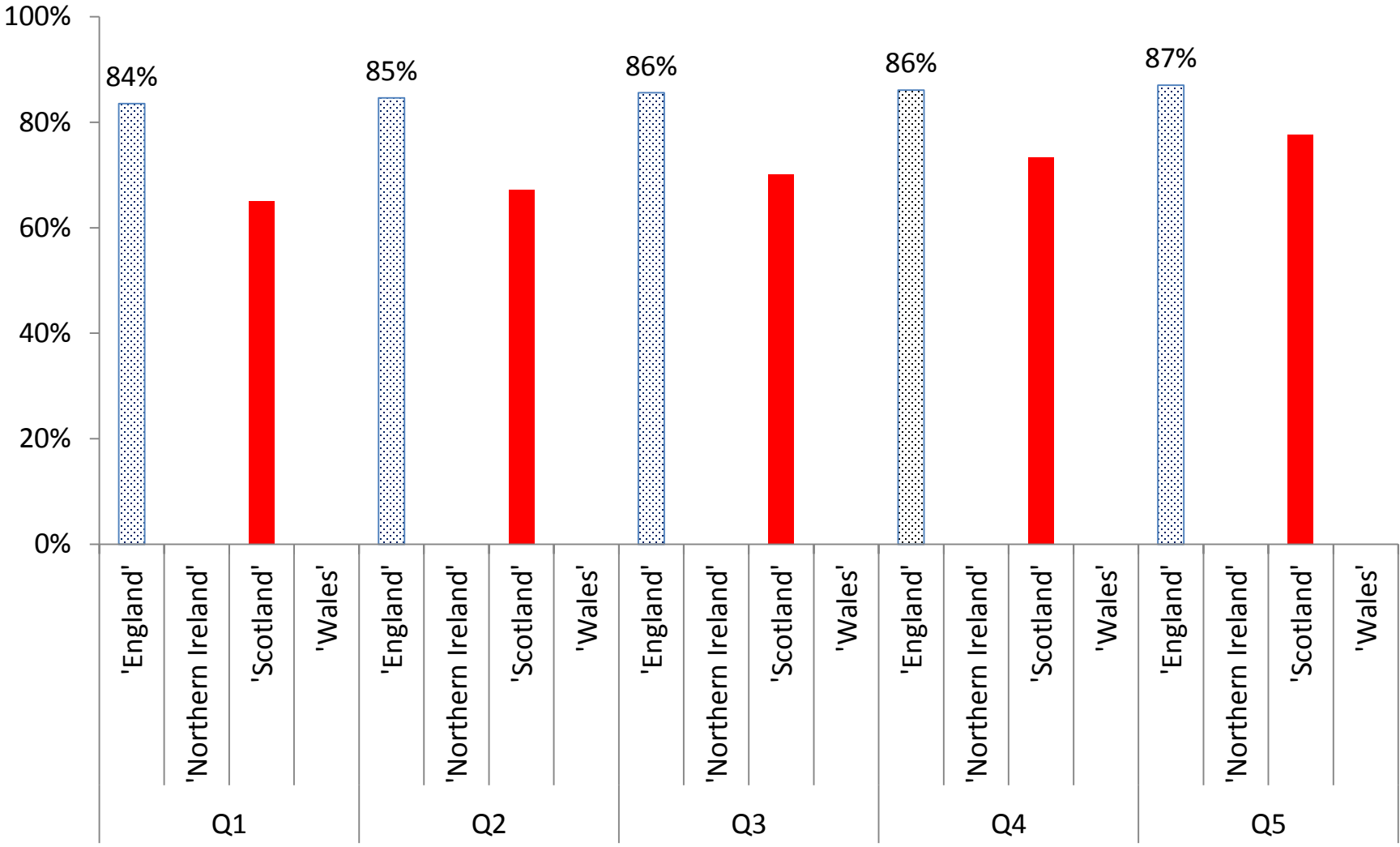
Source: UCAS

# UCAS acceptance rates at age 18, by POLAR3 quintile: 2015 cycle by domicile (Scotland and England)



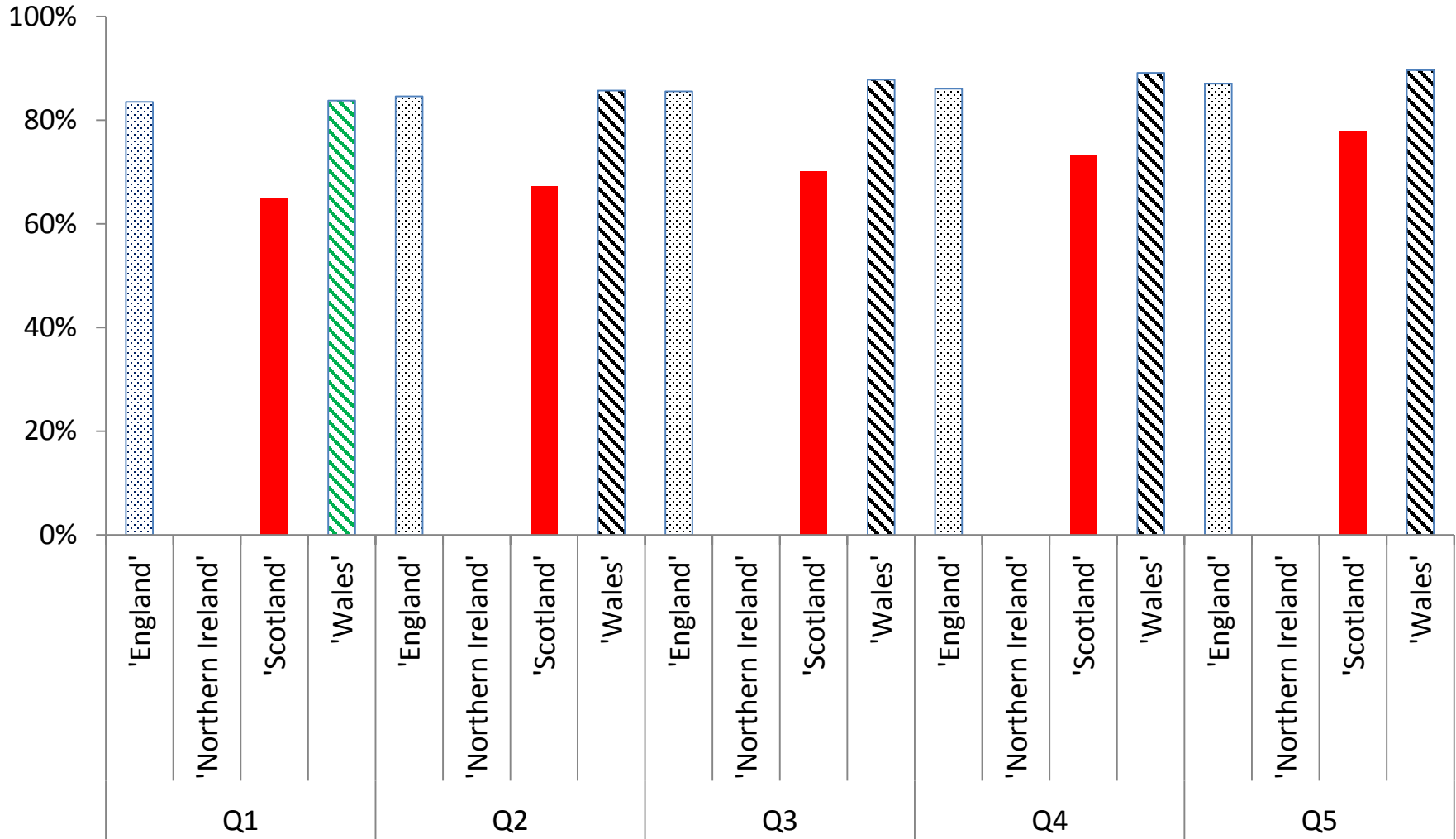
Source: UCAS

# UCAS acceptance rates at age 18, by POLAR3 quintile: 2015 cycle by domicile (Scotland and England)



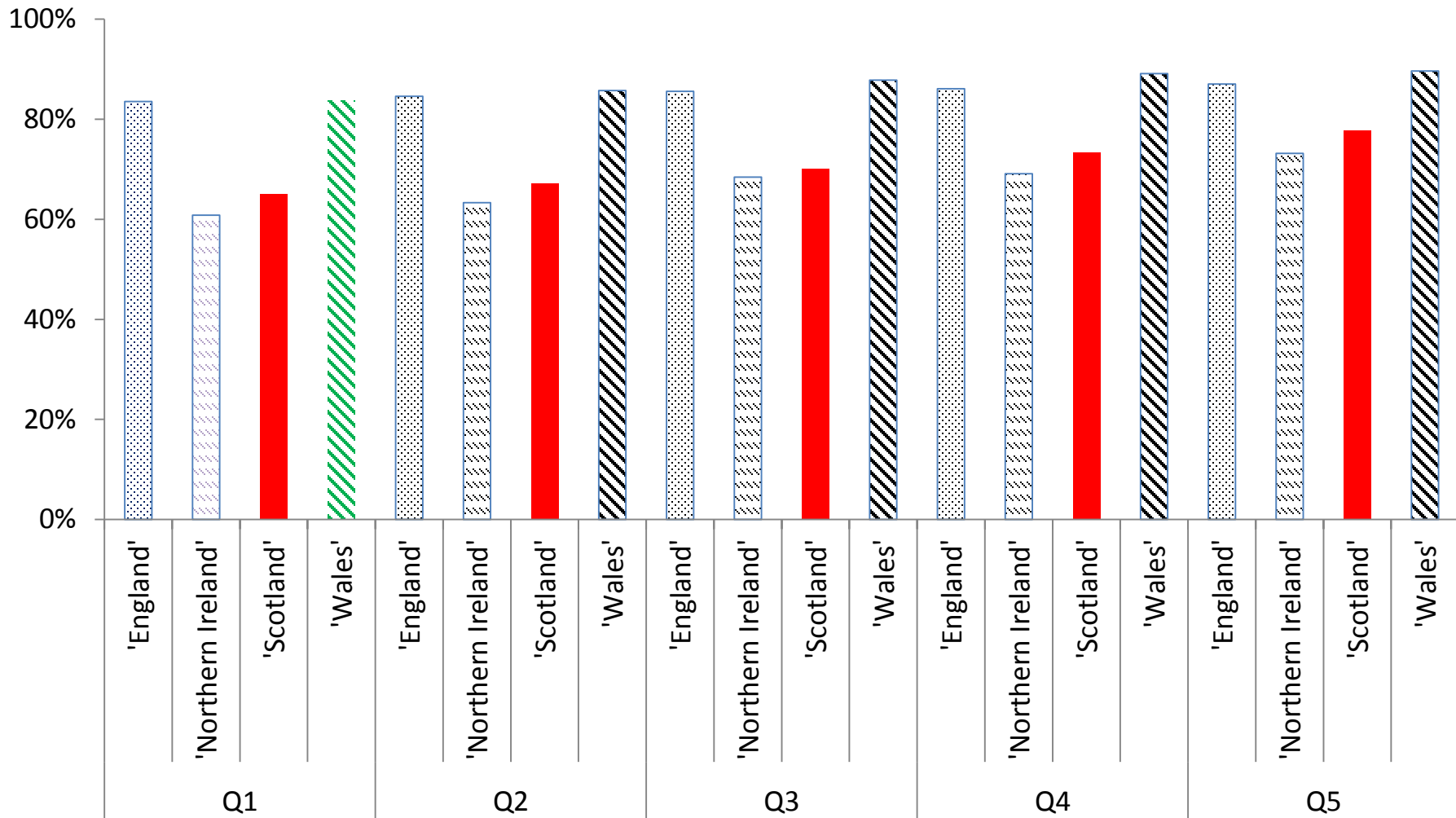
Source: UCAS

# UCAS UCAS acceptance rates at age 18, by POLAR3 quintile: 2015 cycle by domicile (England, Scotland and Wales)



Source: UCAS

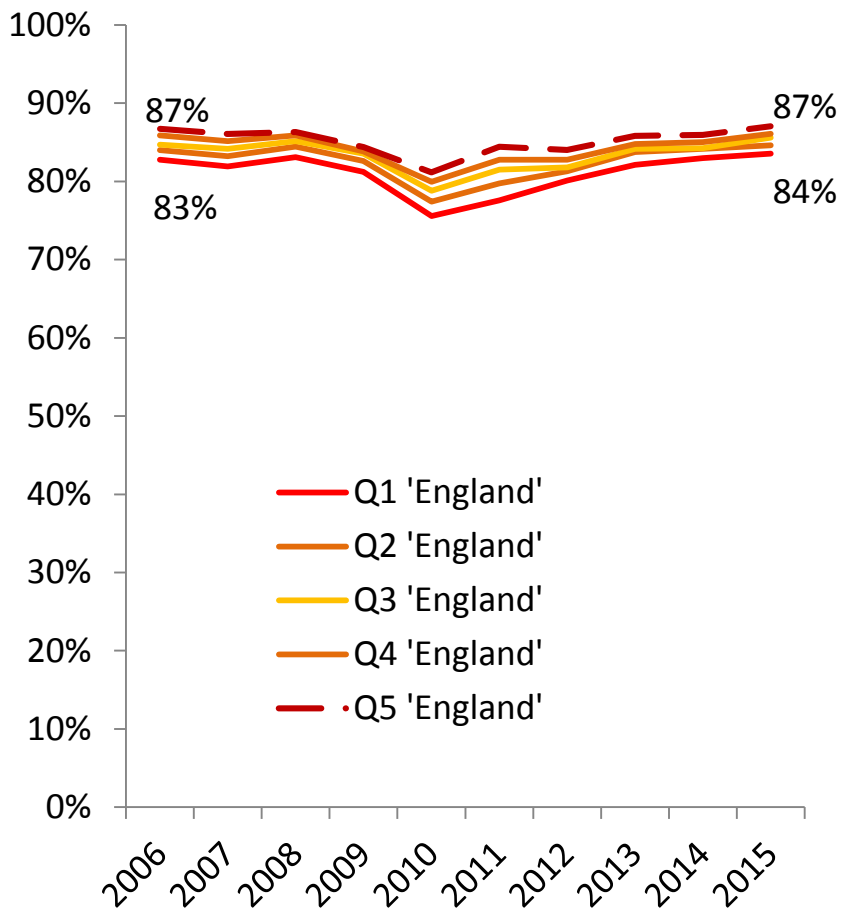
# UCAS acceptance rates at age 18, by POLAR3 quintile: 2015 cycle by domicile



Source: UCAS

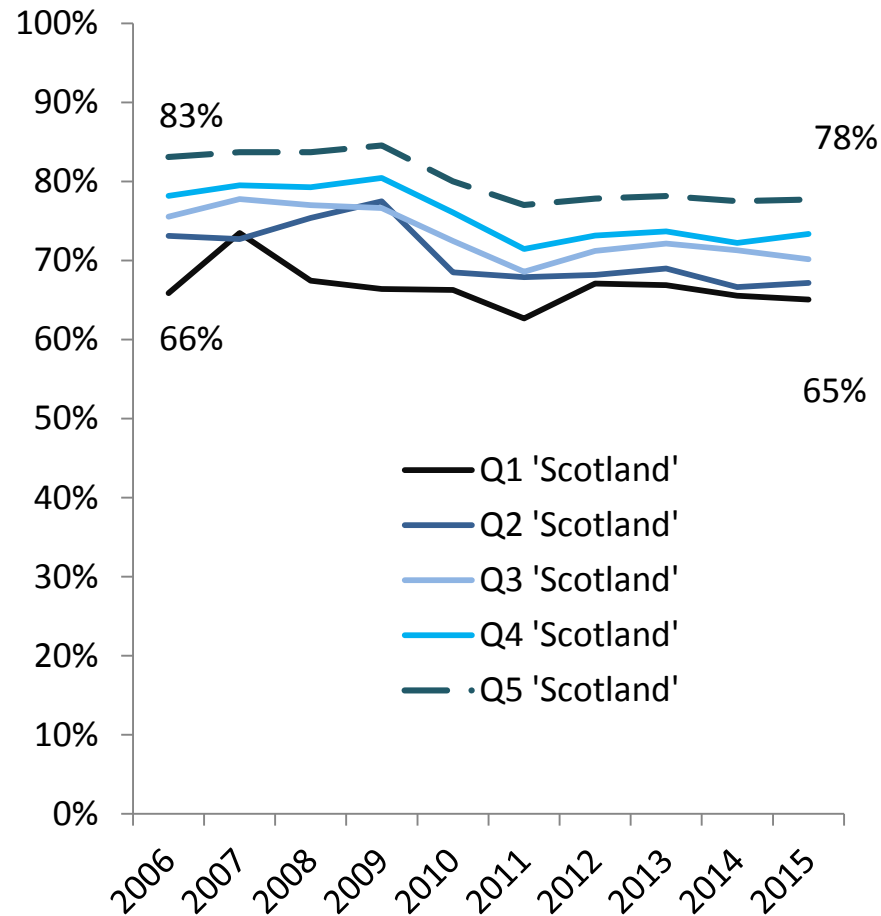
# UCAS acceptance rates at age 18 by POLAR3 quintile 2006 -2015

## England

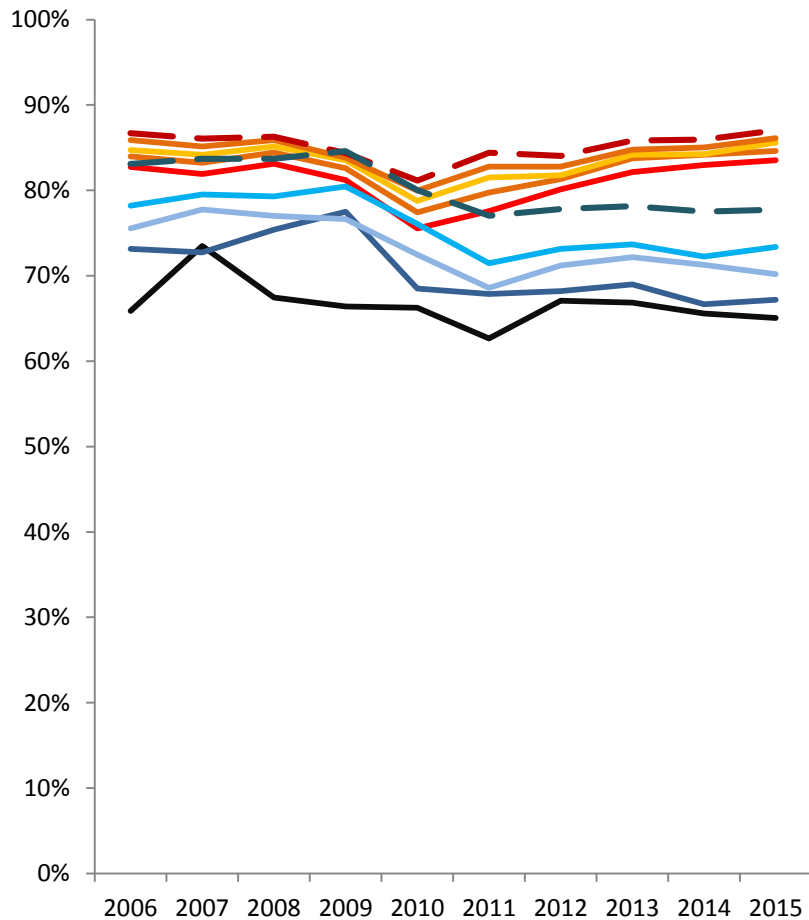


Source: UCAS

## Scotland



# UCAS acceptance rates at age 18 by POLAR3 quintile 2006 - 2015 (England and Scotland)



Source: UCAS

- Very similar rise in volume of applications in both nations over period, with particular increase in 2009/2010.
- Acceptance rates dipped in England, then recovered.
- Acceptance rates dipped in Scotland, then continued to fall, establishing a new, lower norm.

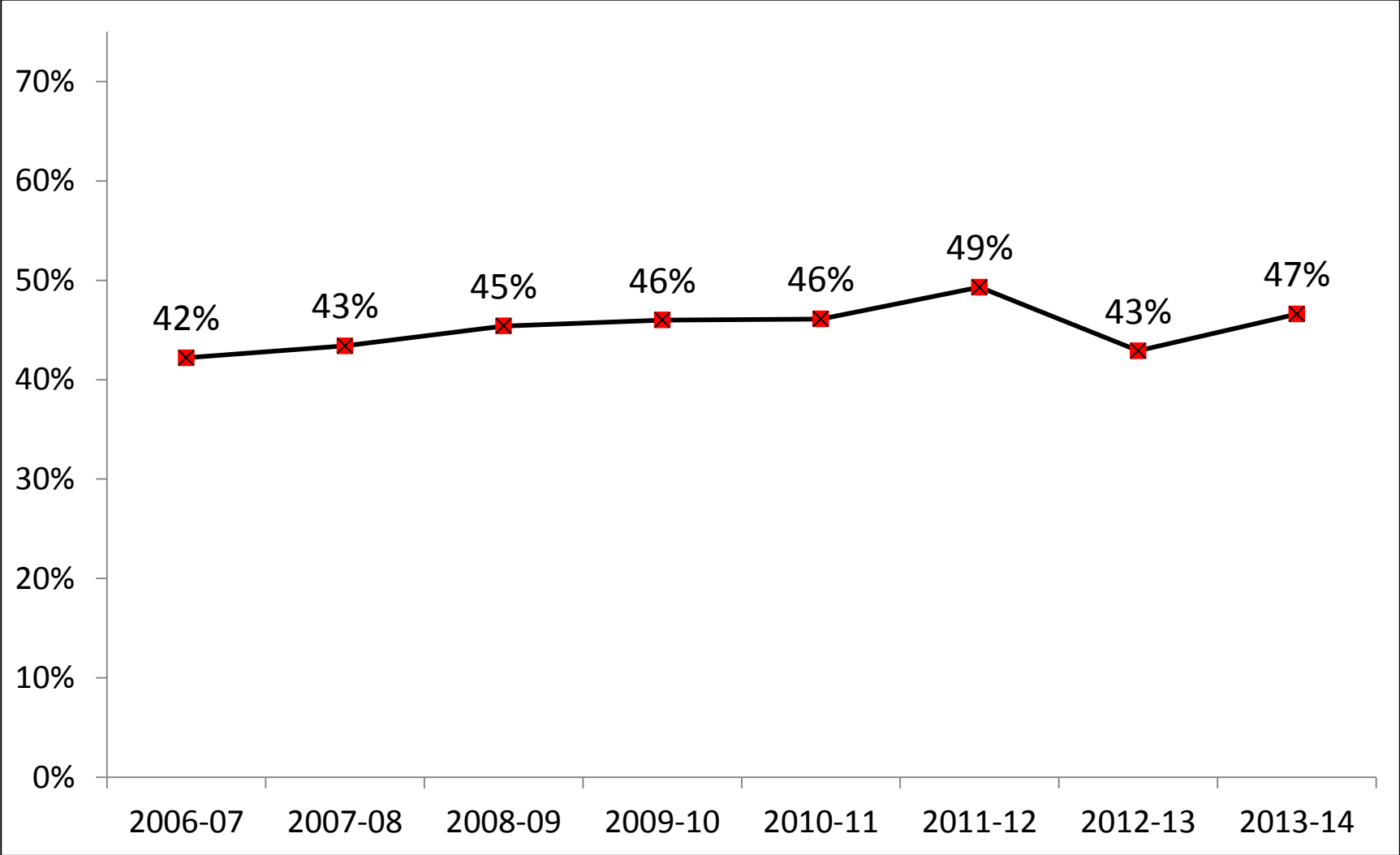
## **Summary: UCAS entry rates for the most disadvantaged – Scotland in comparison with other UK nations**

- Scotland's combination of **lower application** and **lower acceptance** rates is unique and explains the difference in direct entry rates to university at 18 between Scotland and other UK nations, particularly for the most disadvantaged.
- The difference for this group with England is **explained more or less equally by lower interest from this group in applying, and lower success rates when they do.**
- Lower acceptance rates for Scots through UCAS are likely to be related to the tighter supply of university places for Scots in Scotland. Greater difference by background is likely to relate to higher entrance requirements which follow from that.

# Higher Education Initial Entry Rate (HEIPR)

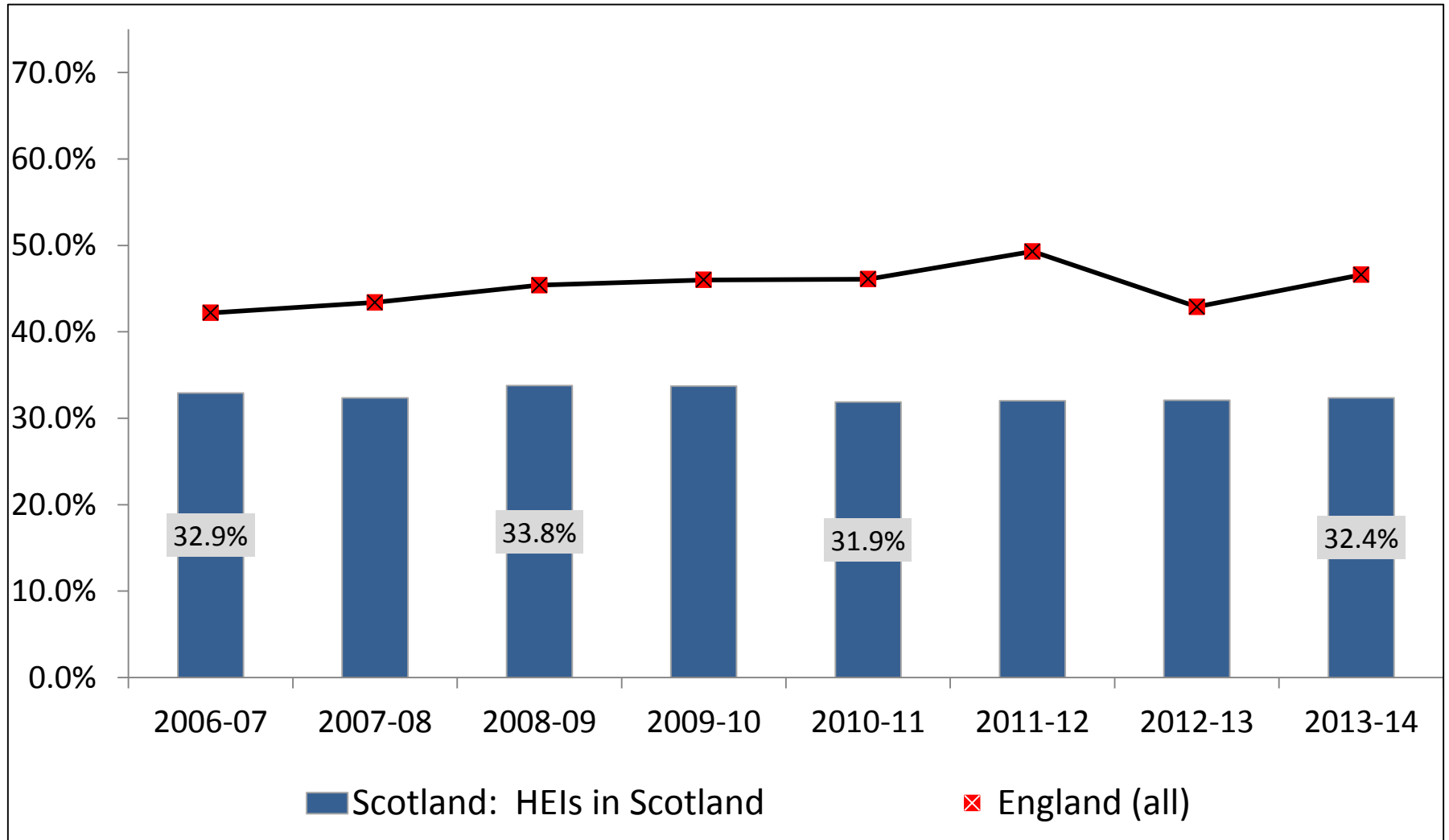
Source	UK government (BIS) and Scottish Government (SFC)
Countries	England and Scotland
Age	Sum of the entry rate at each age up to 30 (17 – 30 in Scotland, 18 - 30 in England).
Institutions	All providers
Includes	Initial entrants on HE courses at any level. Full-time and part-time, lasting at least 6 months, who attend for at least 6 months.
Excludes	Re-entrants, who have already been counted in previous years.

# Higher Education Initial Participation Rate (to age 30) England - all

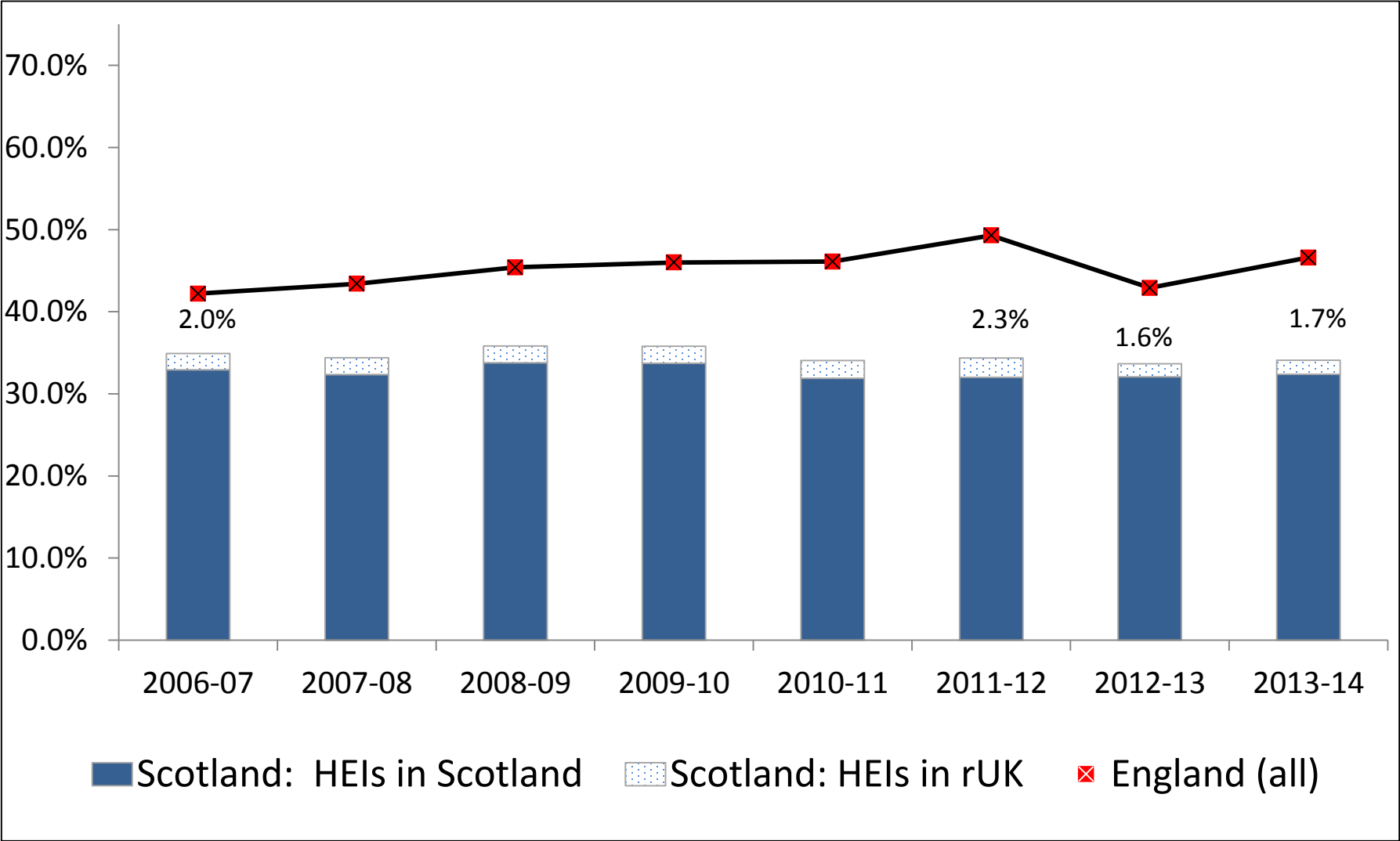


Source: BIS

# Higher Education Initial Participation Rate (to age 30) Scotland – HEIs in Scotland; England - all

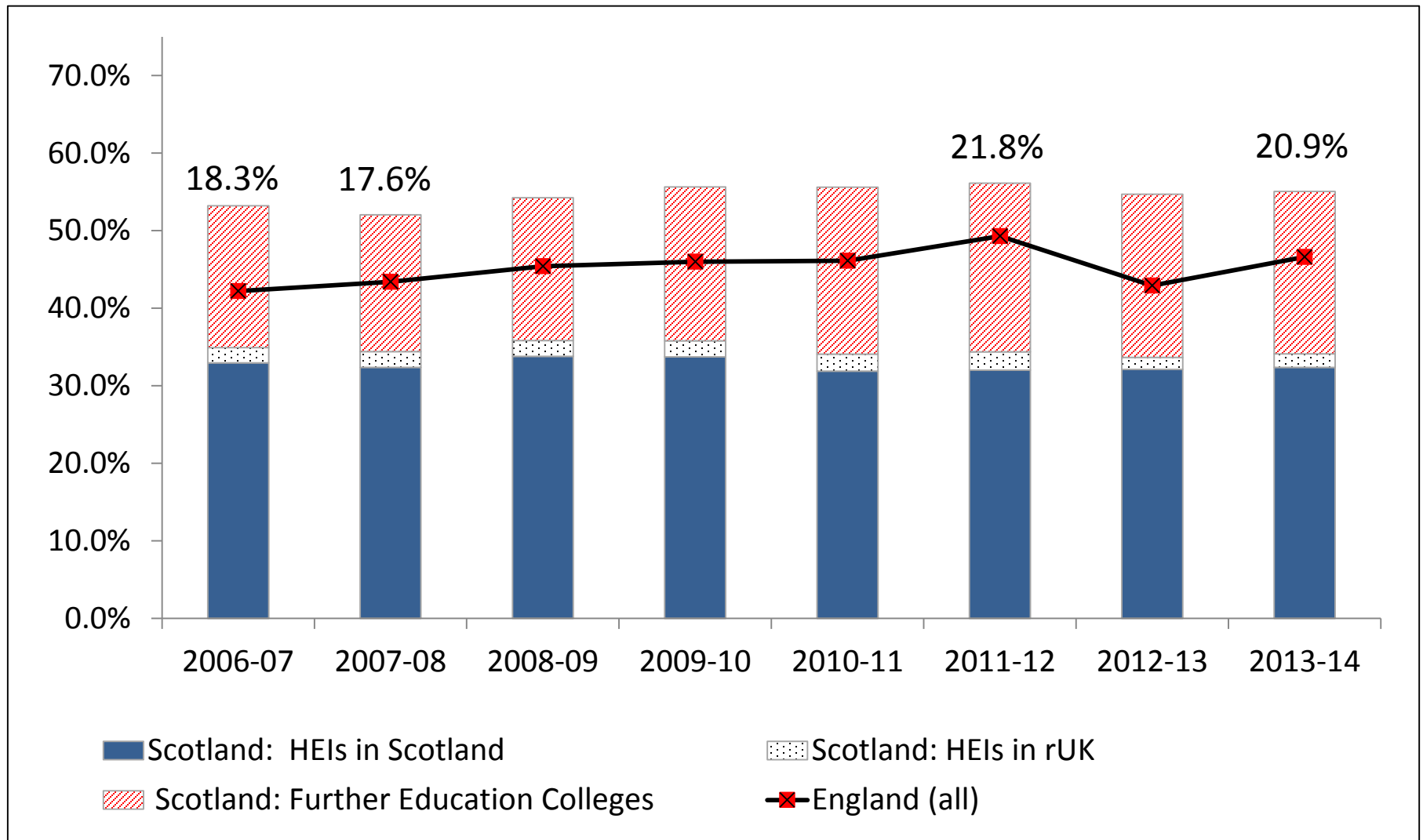


# Higher Education Initial Participation Rate (to age 30) Scotland – HEIs; England - all



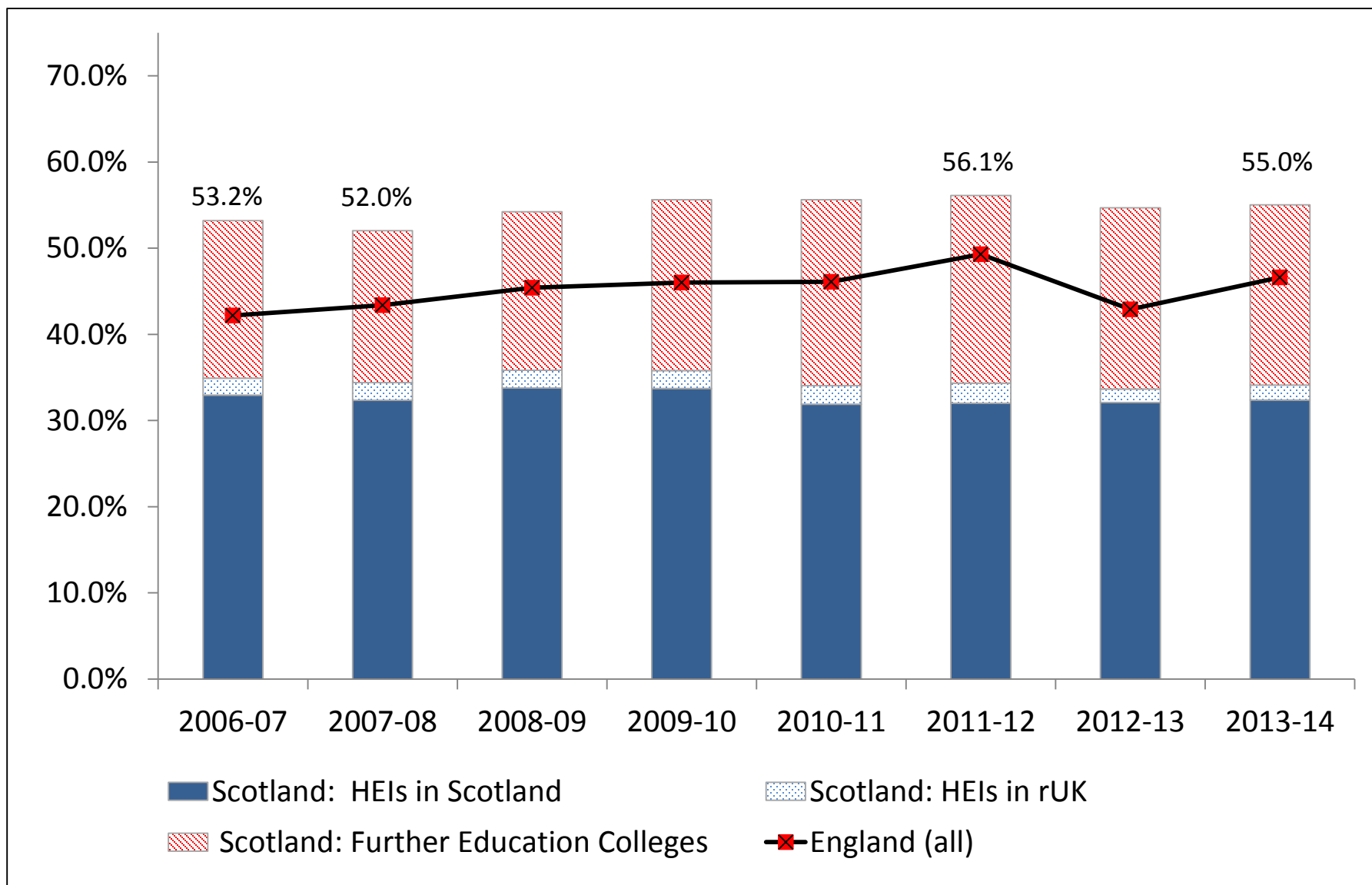
Source: SFC, BIS

# Higher Education Initial Participation Rate (to age 30) Scotland – HEIs and FECs; England - all



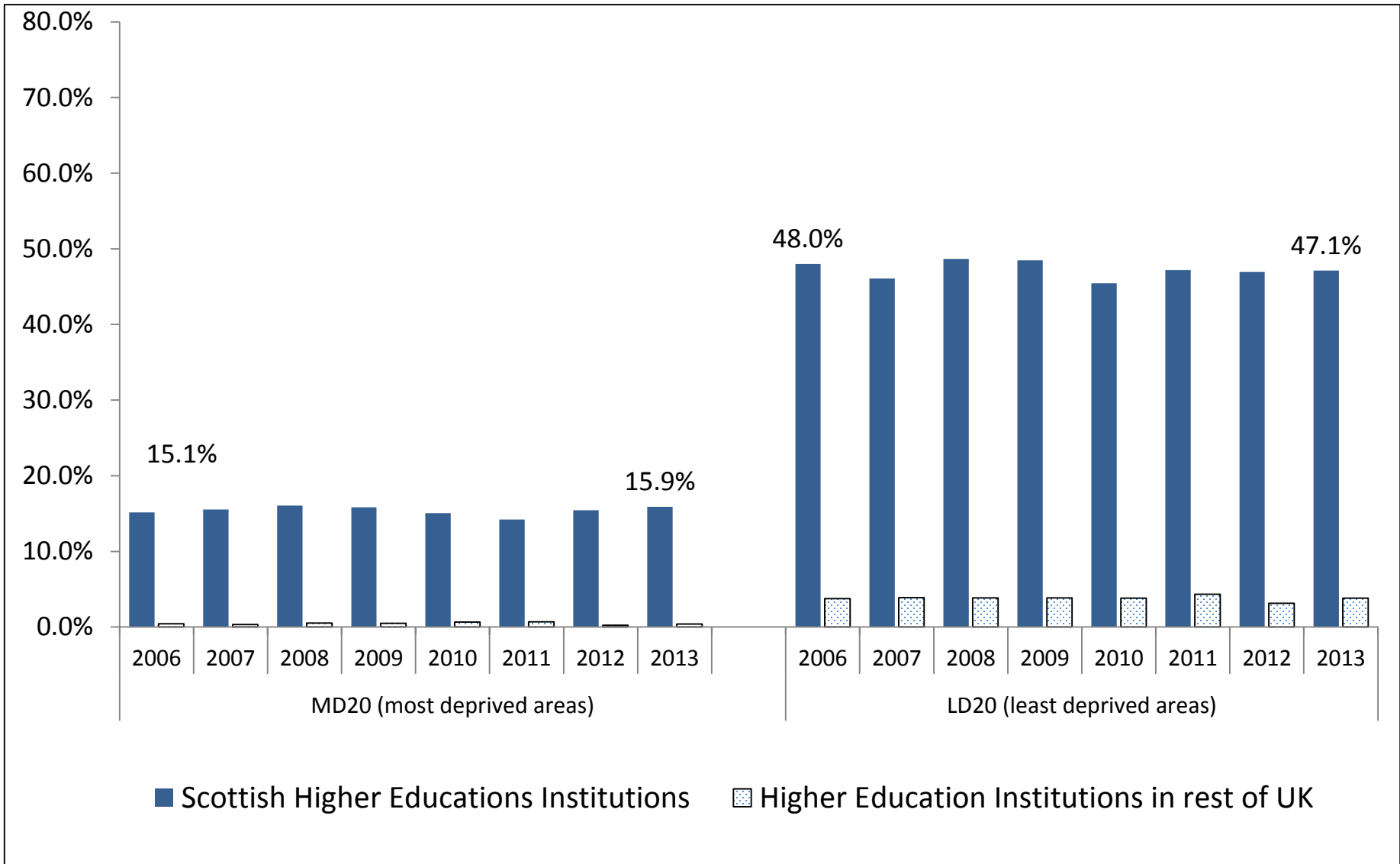
Source: SFC, BIS

# Higher Education Initial Participation Rate (to age 30) Scotland – HEIs and FECs; England - all



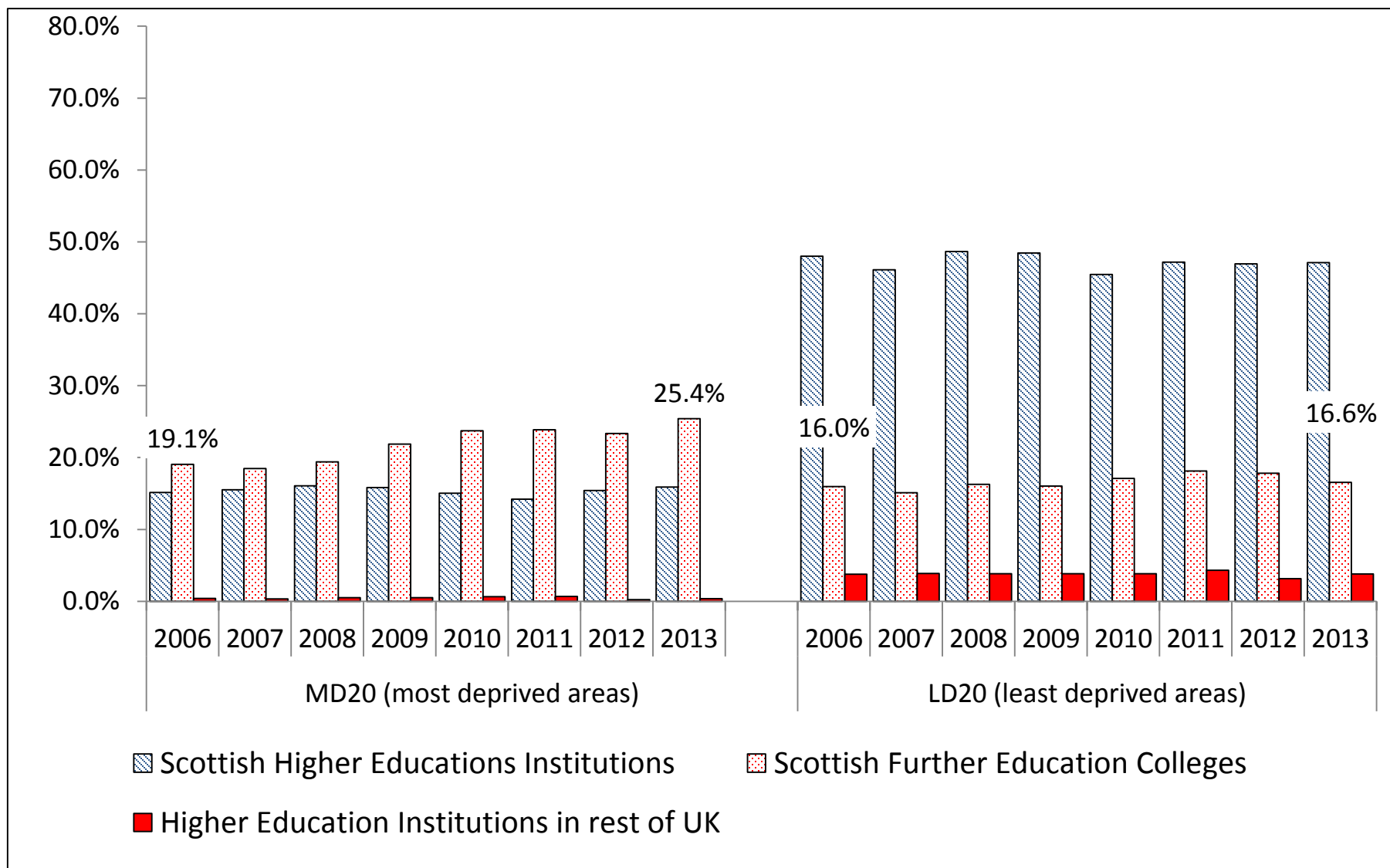
# Higher Education Initial Participation Rate (to age 30)

## Scotland – by most and least deprived 20%: higher education institutions

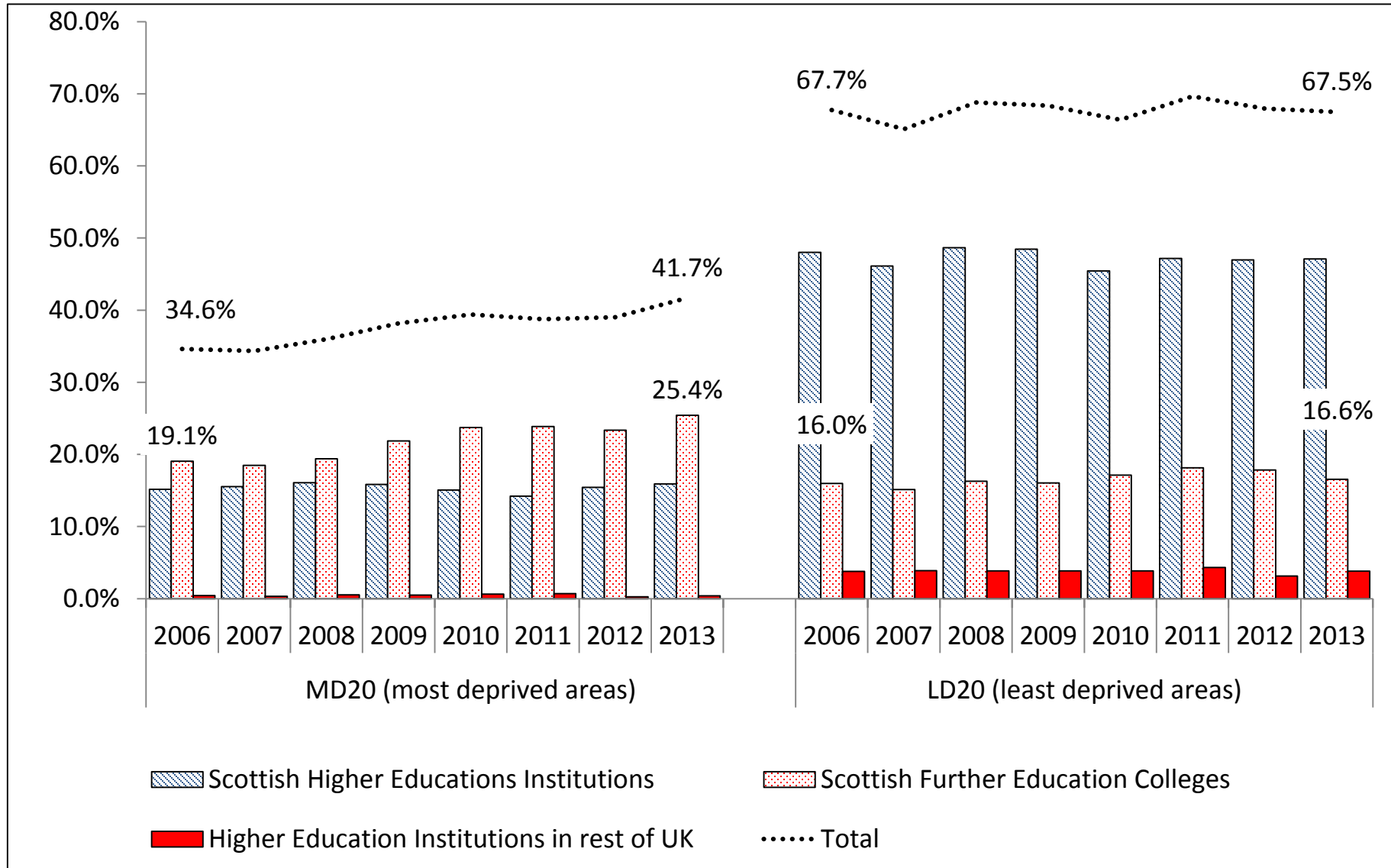


Source: SFC

# Higher Education Initial Participation Rate (to age 30) Scotland – by most and least deprived 20%: all entrance routes



# Higher Education Initial Participation Rate (to age 30) Scotland – by most and least deprived 20%: all entrance routes



## **Entry to HE through FE colleges: equivalence issues with direct entry to university**

- HN-level qualifications alone: lower earnings gains, access not enabled to the same range of occupations, particularly the professions.
- For the remainder who transfer to university:
  - Around 50% of these will obtain no credit or only partial credit, requiring repeat years (particularly if moving onto one of the older universities), leading to higher direct and opportunity costs.
  - For those obtaining full credit, more limited subject and institutional choice.
  - Potential transitional challenges - social/cultural/pedagogical.

# Discussion points

- Explanations for the stronger influence of background on university application rates in Scotland at age 18.
- The overall supply of university-level opportunities in Scotland, and the link between greater competition, required entry qualifications and the influence of background on acceptance rates.
- The additional costs often associated with starting in college and then moving to university (and other articulation issues).
- The comparability of different levels of HE; how far entry to college for HN-level study is comparable with, say, entry to a low tariff HEI in England.