

Tony Gallagher, Queen's University Belfast (Edinburgh, 2015)

WHAT HAVE WE LEARNED ...

The end of academic selection?



1973 - Advisory Council on Education



1976 - Labour Direct Rule Minister



2001 - Burns Report



2002 - Minister of Education



2006 - Education Order



2008 – Ministerial decision on 11+ tests

NI research into the effects of selective education (Gallagher and Smith, 2000)

Primary schools

- Test preparation
- Disrupted 'normal' curriculum
- Test results affected by social background

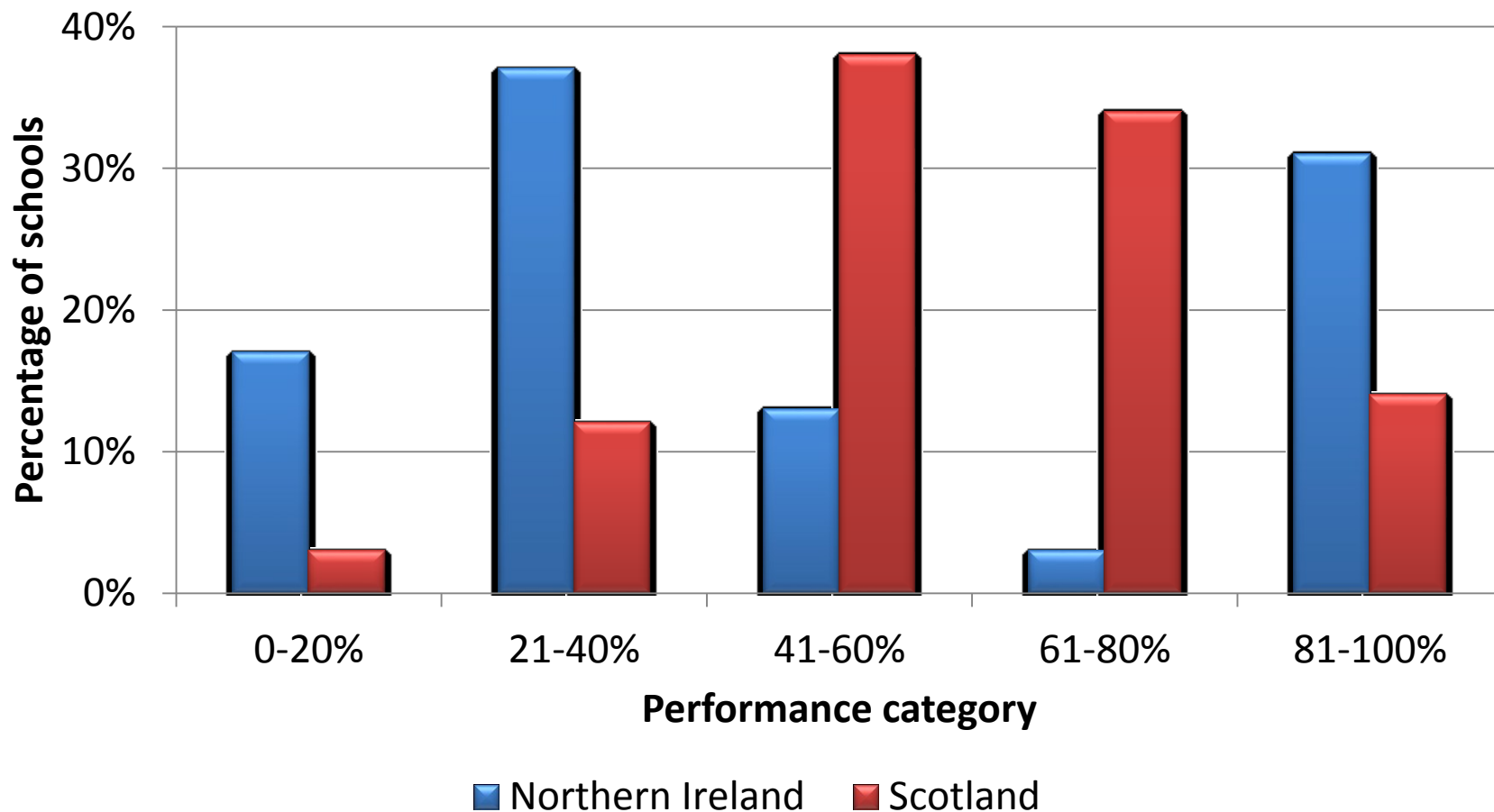
Post primary schools

- Social patterns to school access
- Bipolar pattern of performance
 - High achieving grammars
 - Long tail of low achievement

Education

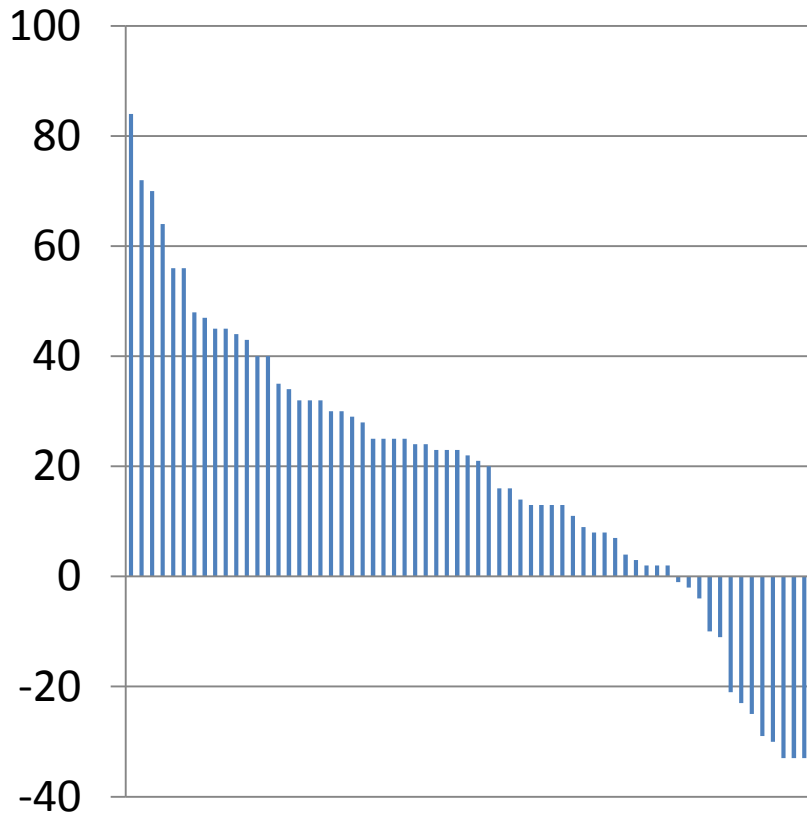
- Perceptions of system mediated by location
- Divides pupils, parents and teachers

School leaver patterns Northern Ireland & Scotland (1990s)

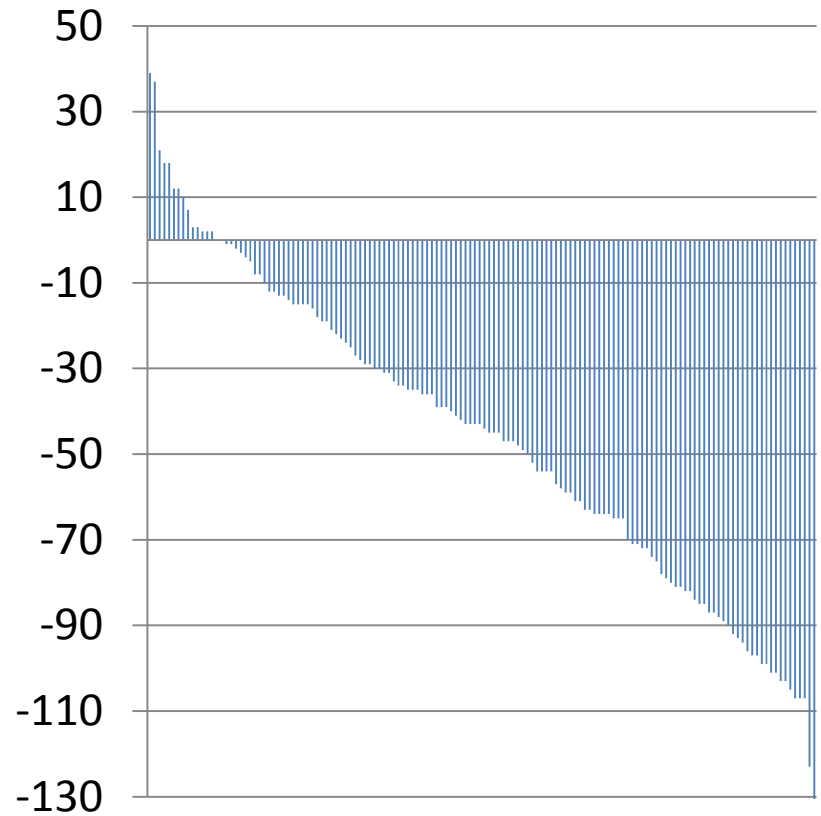


2013 transfer preferences: difference between 1st preferences & places

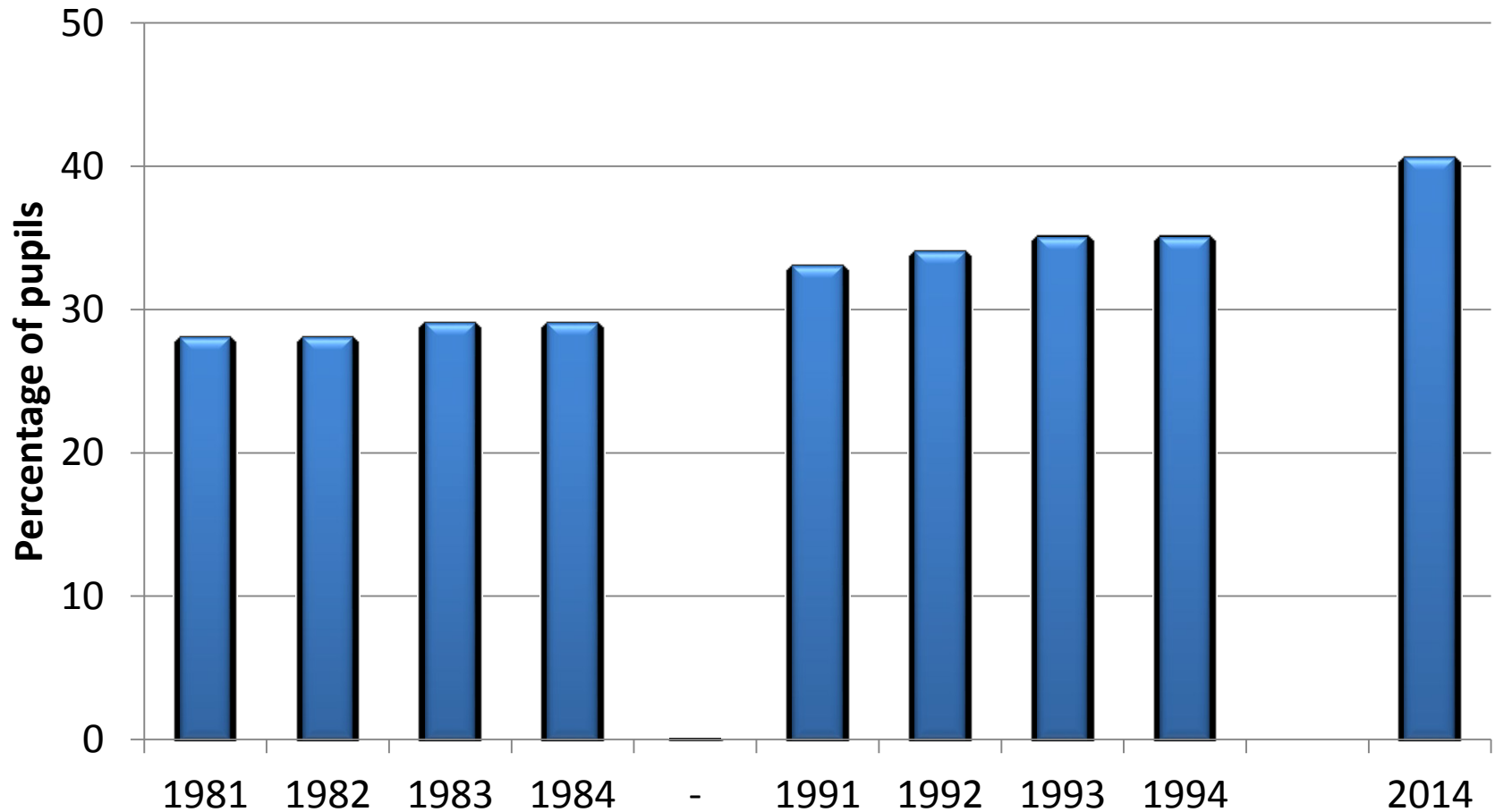
Grammar schools



Secondary schools

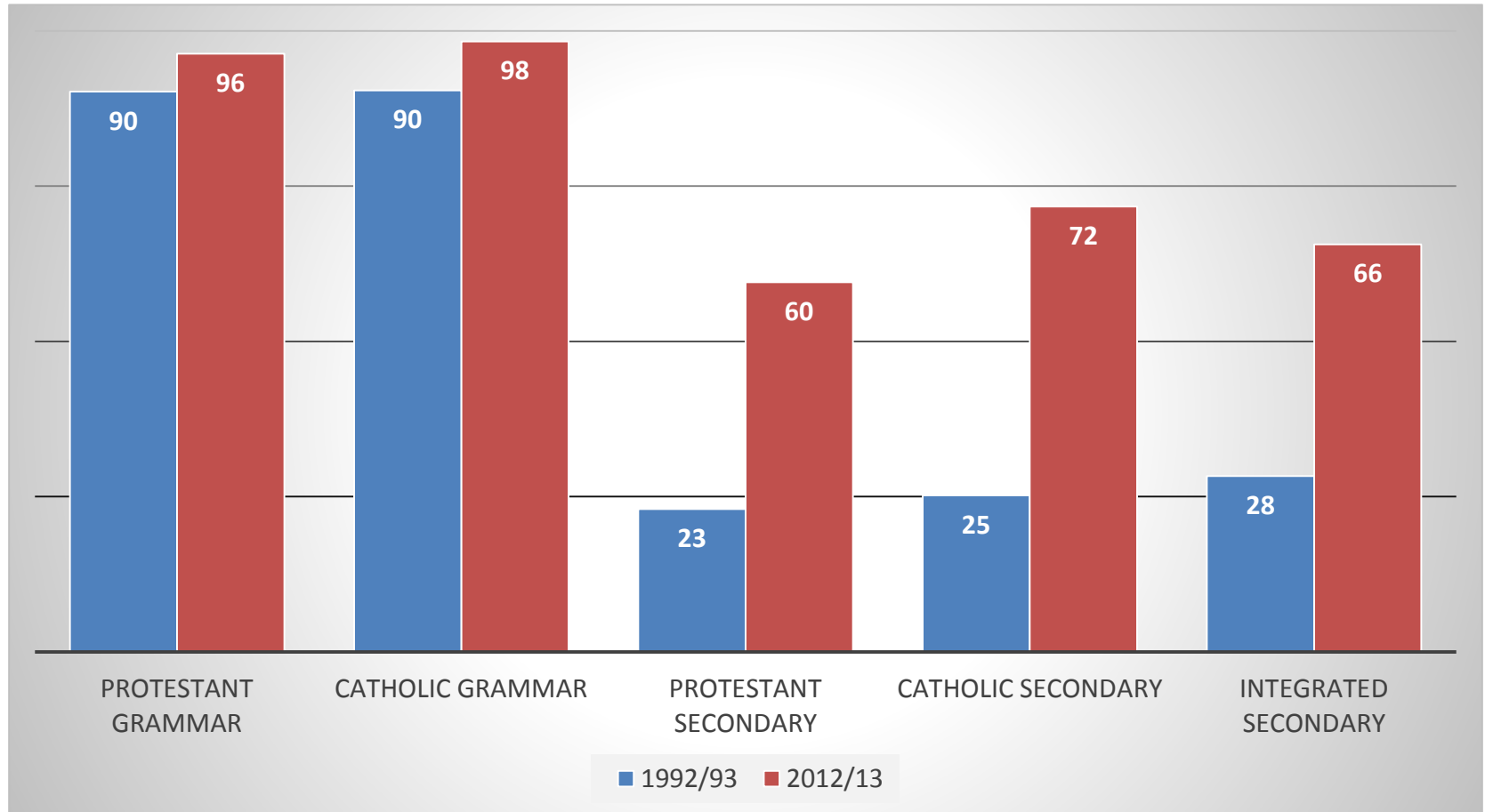


% of pupils entering grammar schools

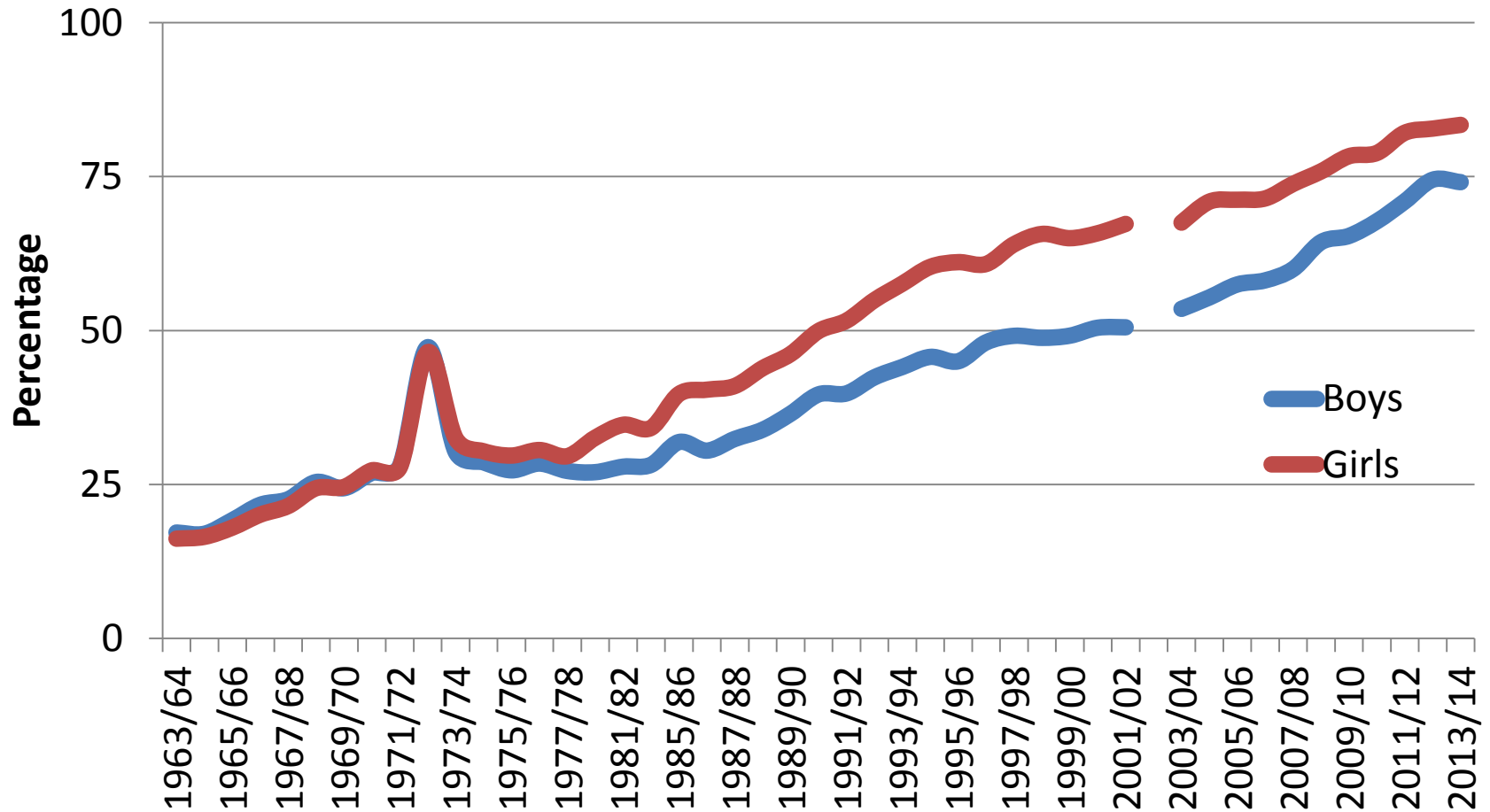


Performance change 1992/93 & 2012/13

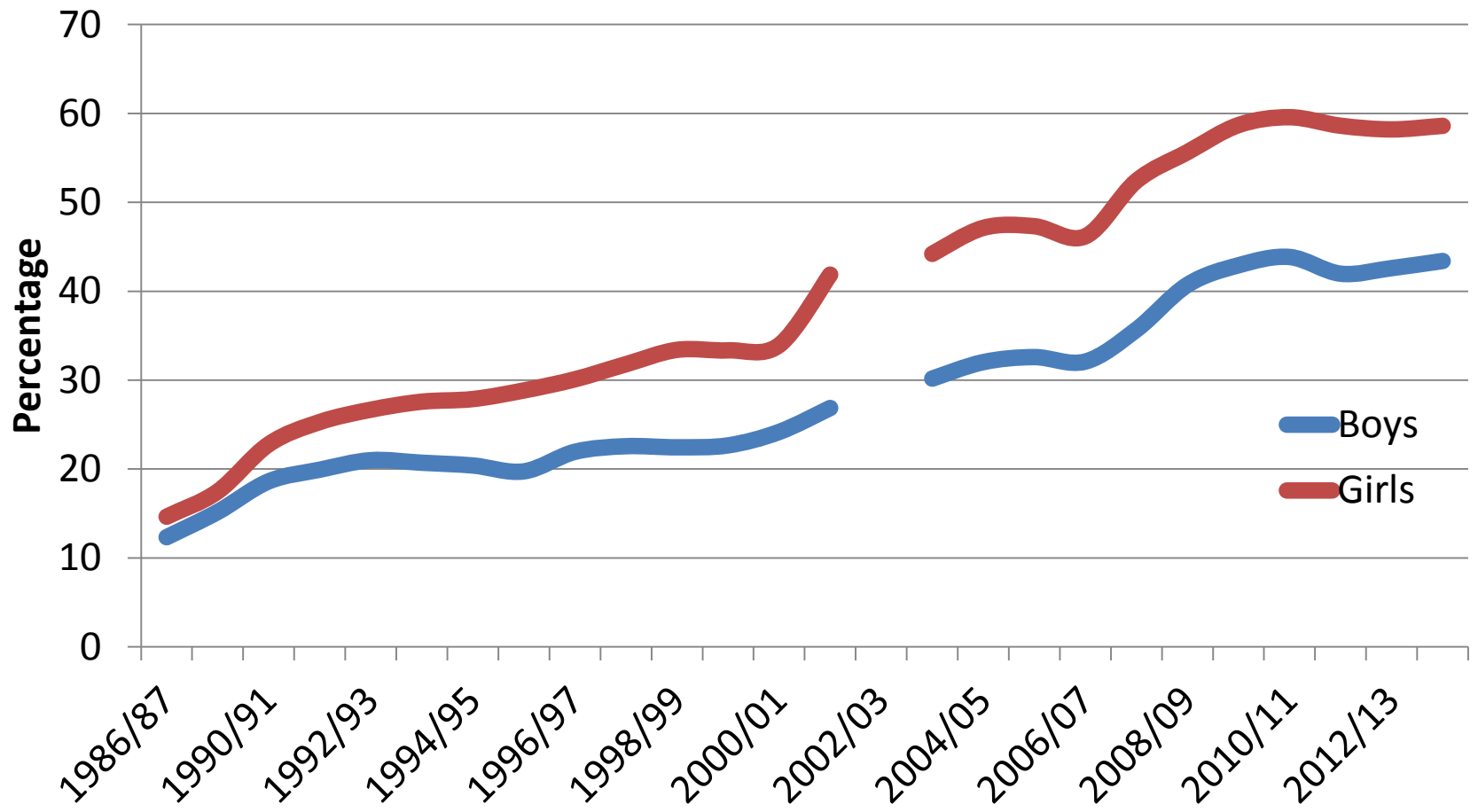
% Year 12 pupils with 5+ good GCSEs



% school leavers with 5+ good GCSEs 1963/64 to 2013/14

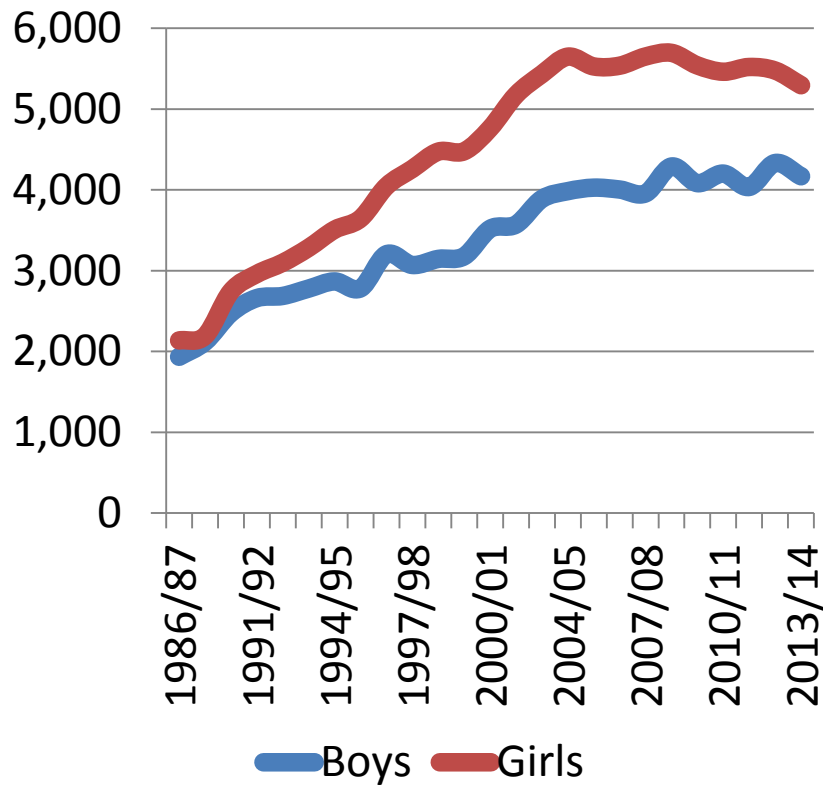


% school leavers with 3+ A Levels, 1986/87 to 2013/14

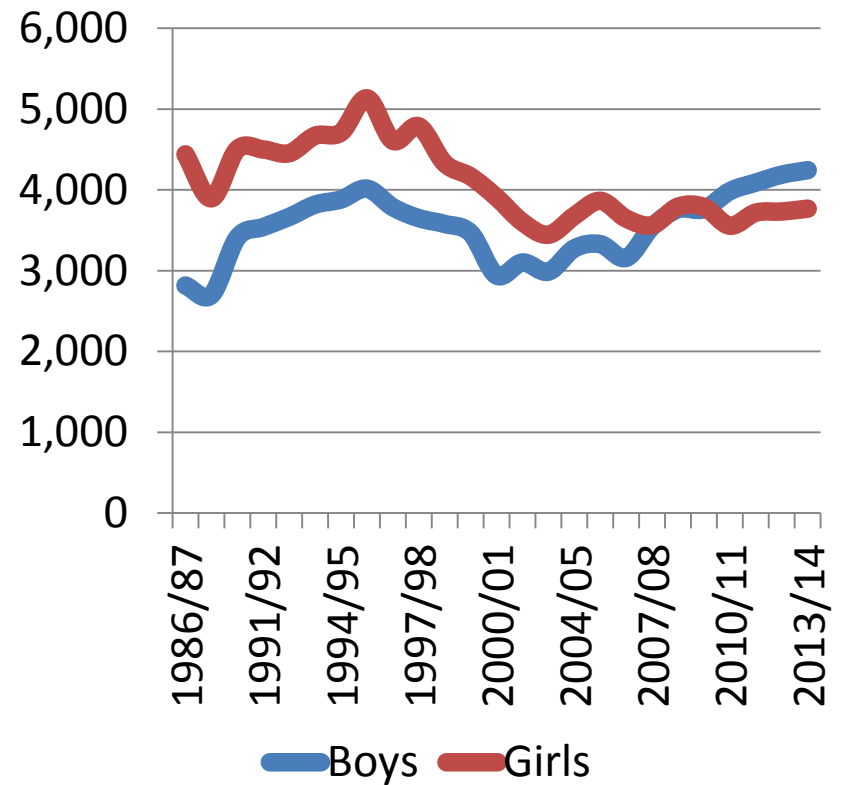


Number of school leavers 1986/87 to 2013/14 entering ...

... higher education

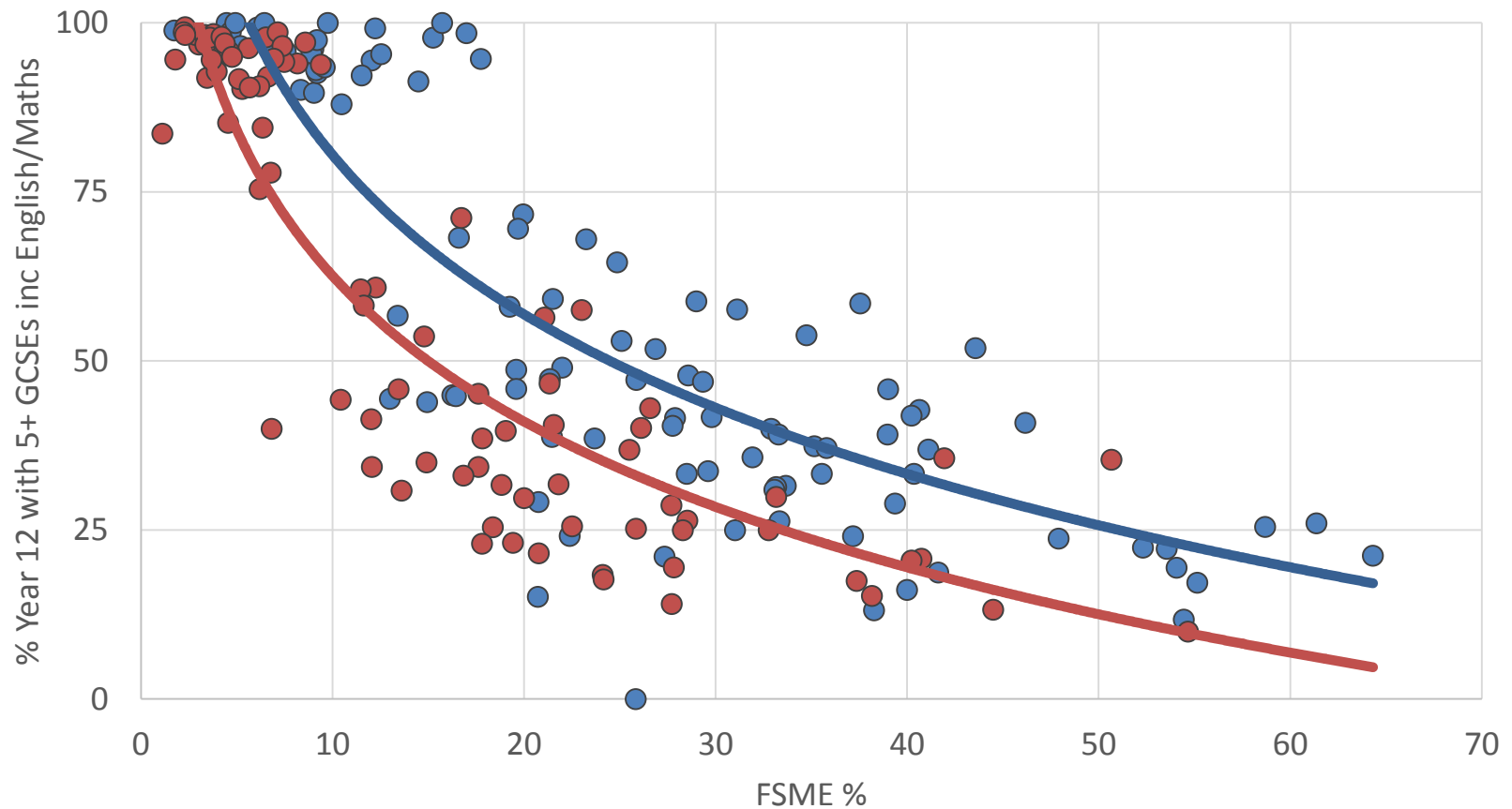


... further education

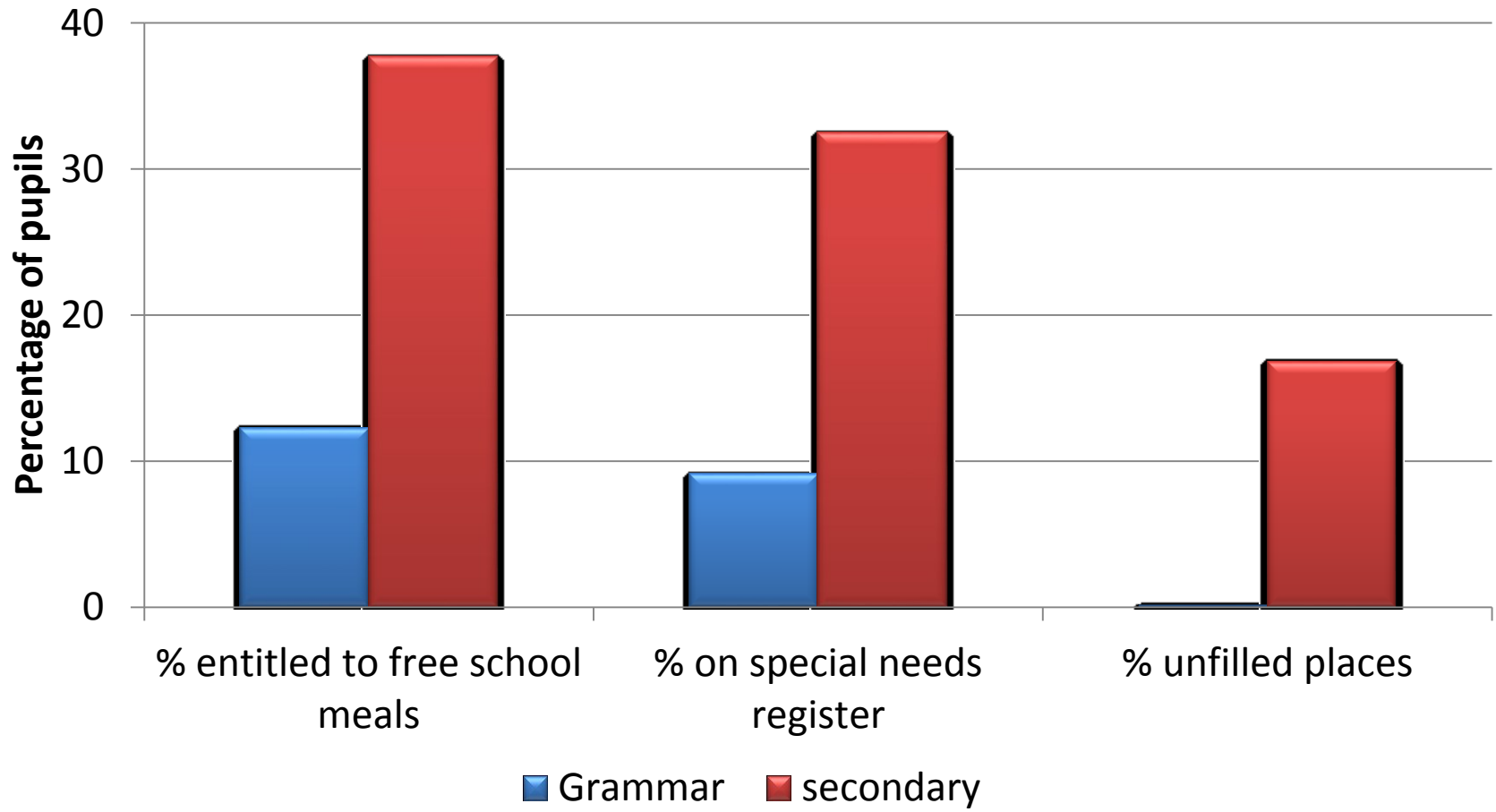


School performance, 2012/13, by sector:

% Year 12 with 5+ good GCSEs inc. Maths/English



Social patterns, grammar & secondary schools, 2014/15



Social achievement gaps: all pupils, 2012/13

